

13 Cornell Avenue, Valley View, SA 5093

House For Rent

Tuesday, 7 May 2024

13 Cornell Avenue, Valley View, SA 5093

Bedrooms: 3

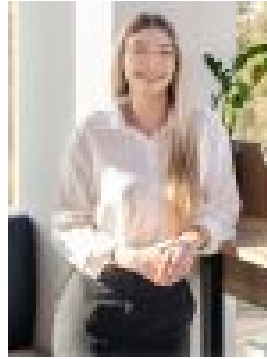
Bathrooms: 2

Parkings: 2

Type: House



Kaitlyn Beere
0404321914



Elly Mortimer
0421660484

\$675 per week

This spacious home offers two living areas and three bedrooms along with gas cooking and reverse cycle air conditioning. It is perfect for a family wanting a low maintenance lifestyle. What we love about this property: - Open plan living and dining with downlights throughout- Second living area with plenty of natural light- Spacious kitchen featuring plenty of storage space, island bench, dishwasher, extra wide stainless steel oven, five burner cooktop, dual sink and fridge alcove- Linen cupboards situated in the hallway- Master bedroom, generous in size with walk in robe and ensuite- Ensuite featuring shower, toilet and his and her vanity with storage- Bedroom two and three both carpeted with built in wardrobes- Central bathroom featuring shower and bath with separate toilet and powder room- Laundry with plenty of storage and easy external access- Undercover entertaining area to the rear- Low maintenance rear yard with automatic sprinkler system- Automatic single garage with rear roller door access to side courtyard- Floating floorboards throughout the living areas- Ducted reverse cycle air conditioning for year round comfort Conveniently located close to Grand Junction Rd, Gilles Plains Shopping Centre, schools like St Paul's College and public transport. Approx. 20 min drive to CBD and 25 mins to Semaphore beach for those family outings. Bond - \$2,700 Pets - Sorry, not allowed Lease Term - 12 months Water Charges - Quarterly supply and water usage Unfurnished WOULD YOU LIKE TO VIEW THIS PROPERTY? Please submit an enquiry to register your details and be notified of all available inspection times plus receive our online application form. To view and apply for our other available properties please visit www.ocre.com.au/rent Ouwens Casserly - MAKE IT HAPPEN™ RLA: 275403/223245