

13 Davitt Close, Isaacs, ACT 2607

ARCHER

House For Sale

Thursday, 21 March 2024

13 Davitt Close, Isaacs, ACT 2607

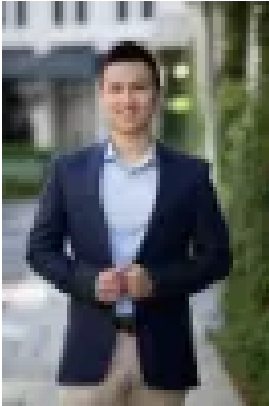
Bedrooms: 3

Bathrooms: 2

Parkings: 2

Area: 213 m2

Type: House



Alex Wang

0262625232

\$1,090,000+

PLEASE NOTE, VIRTUAL FURNITURE IS APPLIED TO PHOTOS TO HELP DISPLAY HOW TO ORGANIZE THE ROOMS Experience the ultimate blend of comfort, convenience, and privacy in this exceptional single-level family residence, situated in the highly coveted and peaceful Isaacs. Perfectly positioned in a serene cul-de-sac, this splendid home promises a tranquil lifestyle complemented by effortless access to the vibrant Mawson and Isaacs shopping precincts, featuring supermarkets, specialty shops, cafes, and childcare centre. Additionally, its proximity to the Canberra Hospital and Westfield in Woden Town Centre, only a short drive away. The home is designed to maximize light and space, boasting an open-plan layout with expansive living areas that invite natural sunlight, creating a warm and welcoming atmosphere. The gourmet kitchen, equipped with plentiful bench space, and extensive storage solutions, poised to cater to the culinary enthusiast. Accommodation includes well-proportioned bedrooms. The master bedroom offers the luxury of direct access to its own ensuite and a walk-in robe, ensuring a private and comfortable retreat. Embracing outdoor living, the home presents a low-maintenance, spacious backyard that is perfect for kids to play safely and both pet-friendly and an ideal canvas for gardening enthusiasts or those yearning for a tranquil outdoor escape. This home not only offers a distinguished lifestyle but also provides a unique opportunity to reside in one of Isaacs' most exclusive and peaceful settings, making it a must-see for everyone. This rare opportunity awaits, whether you're a young family, downsizer, or investor, don't miss out on this exceptional property. Contact us now for further details and secure your appointment today!

FEATURES

- Positioned in a quiet cul-de-sac
- Spacious easy-to-maintain front and backyards
- Single-level floorplan
- Bathed in natural lights
- Ducted gas heating
- Master room with ensuite and walk-in robe
- Gas cooking top
- Ample cupboard and pantry space in the kitchen
- Spa bath-tub
- Double garage with internal access
- Positioned in one of the most desired suburbs in Woden region
- Convenient location close to Mawson and Isaacs shopping precincts, Canberra Hospital and Westfield in Woden Town Centre

Particulars (all approx.)

- Block size: 520 m²
- living: 165 m²
- Garage: 48 m²
- Total: 213 m²
- Year Built: 1992
- Rates: \$954/quarter
- EER: 1.5

DISCLAIMER We have obtained all information provided here from sources we believe to be reliable; however, we cannot guarantee its accuracy. Prospective purchasers are advised to carry out their own investigations and satisfy themselves of all aspects of such information including without limitation, any income, rentals, dimensions, areas, zoning and permits. Any figures and information contained in this advertisement are approximate and a guide only and should not be relied upon for financial purposes or taken as advice of any nature. Individuals, Self-Managed Super Funds, companies, anyone or entity, should make their own inquiries and seek their own advice and rely only upon those inquiries and advice. Archer does not guarantee the accuracy of the information above and are not financial advisers or accountants and do not provide any of the above information as advice of any nature.