

13 Donohoes Avenue, Mulgoa, NSW 2745



Acreage For Sale

Tuesday, 30 January 2024

13 Donohoes Avenue, Mulgoa, NSW 2745

Bedrooms: 5

Bathrooms: 2

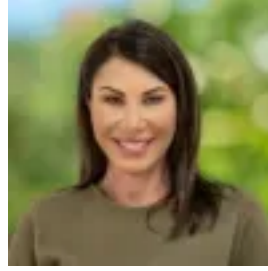
Parkings: 3

Area: 10 m2

Type: Acreage



Tim Cutcliffe
0245878855



Lisa Ryce
0245878855

New Listing

Located in the peaceful landscape of Mulgoa, this 25-acre estate offers a perfect blend of pastoral charm and scenic beauty. A secure gate opens to a long driveway meandering past a shimmering dam, leading to a majestic country homestead, epitomising a dream rural retreat. Resting on an elevated perch, the sprawling single-level residence creates a haven of family living. It houses five bedrooms with built-ins, including a sunlit master with a walk-in robe and ensuite. Meanwhile, accompanying the accommodations are an array of opulent living spaces, including formal lounge and dining rooms, a spacious living room adjacent to a country-style kitchen, and a separate media room or office. Externally, the property boasts a saltwater inground pool with fenced and paved surrounds, formal manicured gardens with paved pathways, and artisan-crafted solid cedar windows and stained-glass features, creating a serene and visually stunning environment. Equestrian enthusiasts will appreciate the barn with electricity supply, ample feed and storage space, 15,000-litre water tank, and two stables with individual yards. A three-car garage with a water closet adds to the site's recreational practicality. Situated within a 15-minute drive of the upcoming Western Sydney Airport, the peaceful estate offers swift access to travel while still enjoying the serenity of rural life. Equally close is Penrith CBD, where various shopping, dining, and entertainment options await. Features: - 25-acre rural estate in the idyllic landscape of Mulgoa - Combination of bushland and cleared parcels with 16 usable acres - Five-bedroom, single-level, Felton-constructed homestead - Opulent living spaces with formal lounge and living room featuring fireplaces - Polished timber floors, cedar doors and windows, and ducted Air - Saltwater in-ground pool, established gardens, and a three-car garage - Barn with two horse stables, post-and-rail yards, and a large dam - 15 minutes' drive from future Western Sydney Airport and Penrith CBD. Speak to your friendly Cutcliffe agent today to organise your visit.