

# 13 Ellesmere Avenue, Schofields, NSW 2762

## Sold House

Friday, 15 March 2024



13 Ellesmere Avenue, Schofields, NSW 2762

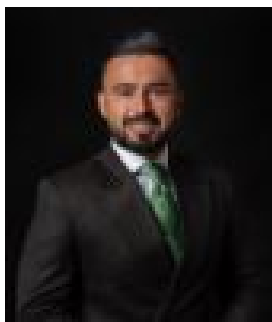
Bedrooms: 4

Bathrooms: 2

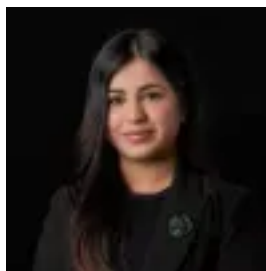
Parkings: 4

Area: 551 m2

Type: House



Amit Kumar  
0288964336



Siya Sachdeva  
0288964336

**\$1,235,000**

First time being offered on the market, this family home has been much loved by the current owners and is situated on a 550 sqm block with 18.92 meter frontage, nestled in one of the serene pockets of Schofields. This delightful residence is the epitome of family comfort and presents with convenience, and sophistication, ready for you to move right in! The home presents an amazing and dynamic layout with a versatile floorplan effortlessly combining the living, dining and kitchen areas making it the heart of the home and creating the perfect space for spending quality time with the family. Boasting a great blend of indoor-outdoor entertaining areas throughout, from the open plan living to the large undercover entertaining area and grassed backyard, this home is truly an entertainer's delight. The well-appointed kitchen features quality stainless steel appliances, stone benchtops, a cooktop and 600mm oven, an island benchtop with an eat-in breakfast bar, a built-in microwave, a walk-in pantry and an abundance of storage space. Accommodation consists of four great-sized bedrooms spread across the well-thought-out floor plan, three of which with built-in robes. The master bedroom features a walk-in wardrobe and a private ensuite bathroom. Features you will love:- LED lights throughout the home- Ducted Air conditioning- Floorboards throughout- Plantation shutters to all windows- Spacious outdoor entertaining area with blackout blinds/ four carport spaces Location Highlights:- 3 minutes drive and walking distance to Schofields Public School and Schofields Park- 3 minutes drive and walking distance to Schofields Train Station and Schofields Shopping Village - 7 Minutes drive to Tallawong Metro Station- 11 minutes drive to Rouse Hill Town Centre- Short distance to local cafes and Medical Centres Disclaimer: All information contained herein is obtained from property owners or third-party sources which we believe are reliable. We have no reason to doubt its accuracy, however, we cannot guarantee it. All interested person/s should rely on their own enquiries.