

13 Fremantle Avenue, Cranbourne East, Vic 3977



Sold House

Tuesday, 15 August 2023

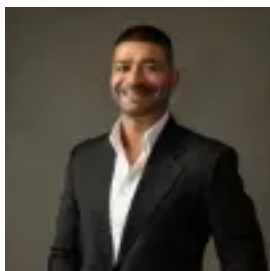
13 Fremantle Avenue, Cranbourne East, Vic 3977

Bedrooms: 4

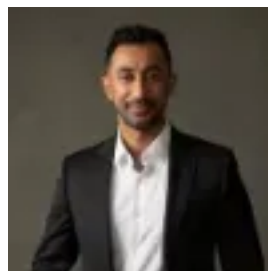
Bathrooms: 2

Parkings: 2

Type: House



Sanjay Singh
0359913888



Vas Selvaraj
0359913888

\$650,000

Quietly tucked away in the highly sought Parks Edge Estate, this contemporary 4 -bedroom family home embraces the ultimate in comfort & convenience! Presenting a fabulous entry into the market for owner-occupiers, downsizers looking for single-level ease, or an excellent portfolio asset for investors! Flowing from its entry is the impressive master suite complete with a walk-in robe and modern ensuite with shower, vanity, and toilet. The remaining three bedrooms with built-in robes are of generous proportions and conveniently situated around the equally impressive & modern family bathroom. With family living in mind the home offers a spacious open plan family living, dining, and kitchen area. The stunning gourmet kitchen showcases stone bench tops, breakfast bench, quality appliances, great storage with overhead cabinets, tiled splashback, and a built-in pantry. The light filled kitchen ideally overlooks the open plan family/dining area, making entertainment and interacting with guests a breeze. Flowing on from the family living and dining area, is the private backyard with low maintenance garden and plenty of space for the kids to play! Found in the heart of the Parks Edge estate, the home is adjacent to Casey Fields multi-sports complex which includes multiple parks, footy ovals, and children's playgrounds to enjoy with the family. The home is also ideally located close to a multitude of other facilities including childcare, schools, Casey Recreation and Aquatic Centre, multiple schools, Centro Shopping Centre, public transport, and all Cranbourne East has to offer. Features:- Modern façade- High Ceilings- Stunning floor tiles- Carpeted bedrooms - Split system air-conditioner- Gas ducted heating- Downlights- Modern kitchen- Blinds- Spacious family bathroom & ensuite- Family-sized laundry- Colourbond fencing- Low maintenance gardens Privacy: Your entry to this property provides consent to the collection and use of personal information for security purposes. It may also be used to provide you with further information about the property, other properties and services marketed by Casey Estate Agents. Please advise our consultant if you do not wish to receive further information. Our full privacy statement is available at our office or online at www.caseyestateagents.melbourne. This is an advertising brochure only. Casey Estate Agents has prepared this brochure to the instructions of the vendor in order to advertise the property. We have not verified the accuracy of the information contained within. You should not rely on this brochure as proof of the facts stated. You should independently verify the matters stated in this brochure before making your decision to purchase. Casey Estate Agents accepts no liability or responsibility for claims arising from a reliance of the information herewith.