

**13 Hazeldene Court, Berwick, Vic 3806**



**Sold Residential Land**

Friday, 29 September 2023

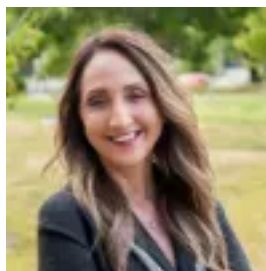
13 Hazeldene Court, Berwick, Vic 3806

Area: 889 m2

Type: Residential Land



Debbie Brettner  
0390887488



Julie Petty  
0390887488

**\$960,000**

With the space and potential to build your dream home, seize this rare opportunity today to secure a premium, ready to build on parcel of land in the the North of Berwick. Positioned at the foot of a cul-de-sac, you'll enjoy a quiet and peaceful setting with no through traffic. The highly desirable North-facing orientation ensures plenty of sunlight throughout the day. The location of this property is truly remarkable, situated almost directly next to two relaxing parks and playgrounds. The 839-bus route is just moments away, providing convenient public transportation options. Take a short walk to the idyllic Wilson Botanic Gardens or stroll to the Berwick town centre, where you'll find Woolworths, Coles, retail shops, cafes, and restaurants. Berwick Train Station, Federation University, Haileybury, St Margarets and Monash Health Casey Hospital are all within a short drive. If you're looking to build your forever dream home this property presents an incredible opportunity not to be missed! Property Specifications: \*889sqm of prime North-facing land \*Quiet cul-de-sac location \*Established residential zone \*Close to schools and parks \*Walk to Berwick town centre, shops, cafes and dining \*Close proximity to Federation University and Monash Health Casey Hospital \*Short drive to Berwick Train Station Call Debbie or Julie today and secure this fantastic opportunity!