

13 Hopkins Street, Googong, NSW 2620

VERV

Sold House

Friday, 18 August 2023

13 Hopkins Street, Googong, NSW 2620

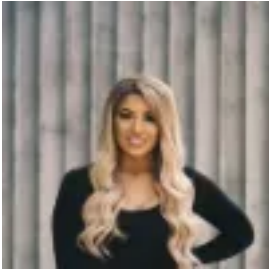
Bedrooms: 4

Bathrooms: 2

Parkings: 2

Area: 200 m2

Type: House



Elizabeth Da Pozzo

0261763476

Contact agent

This truly magnificent residence is welcomed to the market in the popular 'Montgomery Rise'. Number 13 is a gorgeously appointed four-bedroom, two-bathroom home in the heart of Googong, designed and set over 200.43m². Hopkins street delivers a home with two separate living areas, custom joinery, and a family friendly outdoor entertaining area to just name a few features! A stunning segregated master bedroom with walk-in-robe, designer ensuite with free floating double vanity unit and finished with floor to ceiling tiles. plus, three additional well-proportioned bedrooms each with built-in-robos. The property offers impressive finishes and designer inclusions, each set upon a clean, luxuriously warm toned palette with beautiful, landscaped gardens. This really does represent the ultimate in low maintenance and easy-care living. Located in the Montgomery rise development within the Googong township, a popular township with excellent infrastructure within the area, including IGA, Googong Sports and Aquatic Centre, Anglican School, Gorman & Co, rapidly increasing amenity, and numerous parks, walking trails and bike paths. Features Include: - Four bedrooms - Segregated master bedroom with ensuite and walk-in-robe - Two designer bathrooms with rainfall showers - Two separate living areas - Contemporary kitchen with large island bench - Quality kitchen appliances - Walk in pantry - Tisiria gas cook top - Ducted zoned heating and cooling - Video security doorbell - Timber look vinyl floors - Generous laundry with internal access - Double garage with internal access - Covered entertaining area - Beautifully landscaped gardens - Open plan alfresco area Block Size 400m² approx. Living Size: 200.43m² approx. Garage: 30.25m² approx. Alfresco: 12.8m² approx. Porch: 10.44m² approx. Total: 253.92m² approx.