

**13 Hubbard Street, Wyndham Vale, Vic 3024**

**Residential Land For Sale**

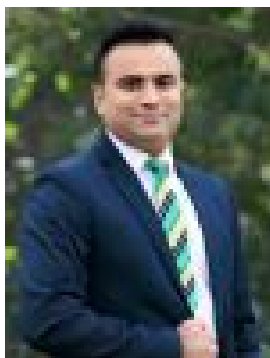
Tuesday, 28 November 2023



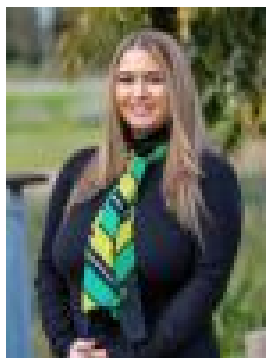
**13 Hubbard Street, Wyndham Vale, Vic 3024**

**Area: 350 m2**

**Type: Residential Land**



Sidd Chaudhry  
0380017300



Annalisha Andrews  
0380017300

**\$330,000 - \$360,000**

Reliance Real Estate proudly introduces a 350 sqm titled block of land in the prestigious Wollahra Rise, eagerly awaiting the realization of your ideal living space. This rare parcel of land offers not just dimensions but a coveted address. Take advantage of the opportunity to build your dream home in a location that stands out for its exclusivity. Suited for young families, first home buyers, upsizers, downsizers, and everyone in between, the vicinity promises a lifestyle beyond imagination. Quality education, recreation, and retail are all within easy reach.

**Proximity to Amenities:** Nature at Your Doorstep: Enjoy the proximity to stunning parklands, sporting facilities, and lush walking trails. A tranquil street surrounded by greenery awaits. **Retail Convenience:** Manor Lakes Shopping Centre and the upcoming shopping center in 2024 are just a short drive away, ensuring your shopping needs are met effortlessly. **Education Excellence:** Manor Lakes P-12 College, Brinbeal Secondary College (opening 2024), and Riverbend Primary School are all within a 5-minute drive, providing excellent educational options. **Easy Commute:** Wyndham Vale Train Station and Wyndham Vale Shopping Square are in close proximity, making daily commuting a breeze. **Health and Well-being:** Access medical facilities conveniently with a nearby medical center, prioritizing the well-being of your family. **Child-Friendly:** A brand new childcare center, just 2 blocks away, ensures convenient care for your little ones. **Future Growth:** Anticipate growth with the promise of a brand new shopping center in 2024, showcasing ongoing development in the community. This exceptional opportunity won't last long. Seize the chance to secure a piece of this desirable location and turn it into your home for years to come. Contact us now to make this land yours! Call Milan on 0469 870 828 or Bilal on 0475 750 002 for any further information.

**DISCLAIMER:** All stated dimensions are approximate only. Particulars given are for general information only and do not constitute any representation on the part of the vendor or agent. Please see the below link for an up-to-date copy of the Due Diligence Check List: <http://www.consumer.vic.gov.au/duediligencechecklist>