

13 Liffey Place, Woronora, NSW 2232



House For Sale

Friday, 5 April 2024

13 Liffey Place, Woronora, NSW 2232

Bedrooms: 3

Bathrooms: 1

Parkings: 2

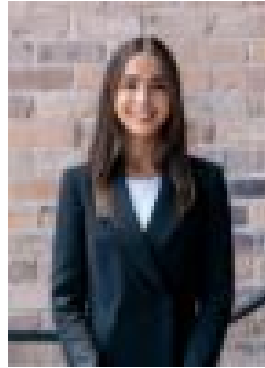
Area: 640 m2

Type: House



Matt Debreczeni

0407204599



Stephanie Blanchard

0405116046

Auction

Perfectly positioned alongside the Woronora River, this fantastic original residence presents an amazing opportunity to renovate or redevelop (STCA). Providing that holiday feeling all year round in one of the Shire's most sought after suburbs. Multiple lifestyle options are on offer with a waterside location, you have access to great entertaining possibilities, swimming, canoeing, fishing only moments from your front door.- Sprawling approx 640m² block- Great canvas, Prime position, Cul de sac setting - A glorious reserve to the water - Brick veneer- 3 Generous bedrooms- Double garage plus ample off street parking- Set amongst the picturesque natural surrounds of Woronora.- A short stroll to parks, kids play equipment, boat ramps, local RSL and iconic Boatshed Restaurant.- This is truly a special lifestyle property that will make you feel like your living a million miles away from the city lights and traffic jams, but yet still so close so everything the Sutherland Shire has to offer. When looking at properties it's important to have confidence in how much you can borrow. As Ray White are partnered with Loan Market they can make this simple and easy for you. Should you wish to know your borrowing powers simply go to www.loanmarket.com.au/brokers/jason-wylie now and our Loan Market broker will be in touch.