

**13 Louise Street, Rye, Vic 3941**

**KAY & BURTON**

**Sold House**

Friday, 26 January 2024

13 Louise Street, Rye, Vic 3941

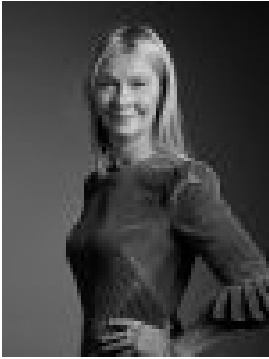
**Bedrooms: 3**

**Bathrooms: 2**

**Parkings: 3**

**Area: 871 m2**

**Type: House**



Liz Jensen  
0418446228



Lorna Duffy  
0403269034

## Contact agent

Elevated above one of the highest dunes in the area, this fresh-faced modern design with a touch of Nordic architecture, boasts an unrivalled vantage point, guaranteeing that every glance offers a breathtaking 270 degree coastal panorama highlighting bay and ocean views from sunrise to sunset. The design of this stylish modern home is a celebration of light, space and functional integration of indoor and outdoor living. Expansive windows invite the coastal beauty inside, while carefully curated spaces offer the perfect blend of comfort and style. The open plan kitchen, dining and living area is perfectly designed for relaxing and entertaining with family and friends, spilling out to the spacious sky deck, embracing an expansive coastal outlook from Arthurs Seat across the bay and around to the back beach. The main bedroom suite is a calm, spacious sanctuary with private balcony, walk in robe and stunning ensuite bathroom with coastal glimpses. A further two zoned downstairs bedrooms enjoy the second living area and full family bathroom. Outside, a thoughtfully landscaped environment with multiple outdoor spaces, creates a private oasis amongst the established native moonah trees, all beautifully designed for sheltered relaxation, entertainment and play. Whether you're hosting a sunset barbecue or enjoying morning coffee with panoramic views, this truly appealing beach house presents an irresistible opportunity. The home has undergone a meticulous, comprehensive top to bottom high quality renovation, features include:

- Engineered oak flooring.
- Custom oak joinery.
- Quality fixtures and fittings throughout.
- European kitchen appliances.
- Reverse cycle air conditioning.
- Ceiling fans.
- LED lighting throughout.
- Extensive garden lighting.