

13 Mapia Rise, Pacific Pines, Qld 4211

House For Sale

Tuesday, 11 June 2024



13 Mapia Rise, Pacific Pines, Qld 4211

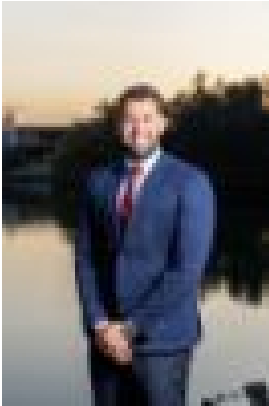
Bedrooms: 3

Bathrooms: 2

Parkings: 3

Area: 678 m2

Type: House



Ricky Agent
0755922706



ParisBella White
0407223182

Auction

THE OPPORTUNITY Nothing short of contemporary comfort, this 3-bedroom, 2-bathroom with Study. This Pacific Pines gem is perfectly positioned to embrace the coveted northern Gold Coast lifestyle. A single-level stunner promises everything you've ever wanted in a family home-and more. Each of the three generously-sized bedrooms offers residents a sanctuary of calm and comfort. The master suite is understatedly a standout, with its private ensuite and walk-in wardrobe exuding sophistication. Enjoy the seamless flow of open-plan living across two spacious living rooms. Tiled flooring throughout the residence also adding to the modern vibe and ensures easy maintenance. While the kitchen is an understated masterpiece with its white stone bench tops, a butler's pantry, soft-closing drawers, and a gas stove top. Outside's north-facing entertaining area is a paradise for those looking to make the most of the Gold Coast lifestyle. Featuring a spa, an outdoor fireplace, and a standalone bar area, it's perfect for hosting gatherings year-round. The massive entertainment space is complemented by a low-maintenance garden, giving you more time to enjoy your new home rather than upkeep. Commuting is a breeze with easy access to the Pacific Motorway (M1), and the Helensvale Train Station offers a convenient alternative for city workers. Weekend adventures also await with Dreamworld, Movie World, and Wet'n'Wild practically on your doorstep. Not to mention the famous Gold Coast beaches, just a short drive away and perfect for those spontaneous seaside outings. For the prospective owner of 13 Mapia Rise, prepare to embrace a relaxed, suburban lifestyle without sacrificing access to urban amenities. The family-friendly vibe of the area is truly palpable, making it the perfect place to raise a family or enjoy a serene retirement. **OWNERS WILL ACCEPT OFFERS PRIOR TO AUCTION.** Property Features: Additional features including: Solar Panels: Reduce your carbon footprint and save on energy bills. 3-Car Garage: Plenty of space for vehicles and storage. Crimsafe Security: Feel secure with top-notch safety features. Standalone Laundry: Practical and spacious for family needs. Tool Shed & Bar Area: A haven for DIY enthusiasts and entertainers alike. Newly Painted Roof: Adds to the home's curb appeal and longevity. Enjoy the added comfort of airconditioning, carpet underfoot and stylish white shutters for that touch of class to three, spacious bedrooms. Two immaculately maintained bathrooms offering a blank canvas for a personalised touch should you wish to modernise further. Two generous open-plan living areas with the freedom to create spaces that suit your lifestyle. Tiled flooring throughout offering a cool and easy-to-clean surface that's perfect for Queensland's climate. A kitchen designed for both the home chef and the entertainer, making cooking a joy rather than a chore. Experience a suburb where pride of ownership shines through every home. Central to three schools and several childcare centers, your family's educational needs are covered. Daily conveniences are at your doorstep with local shops and Helensvale Westfield just a 3-minute drive away. More than an address, 13 Mapia Rise is your gateway to a better lifestyle. Whether you're looking for a peaceful family home or a place to entertain, this property has it all. Disclaimer: This property is being sold by auction or without a price and therefore a price guide cannot be provided. The website may have filtered the property into a price bracket for website functionality purposes. We have in preparing this information used our best endeavours to ensure that the information contained herein is true and accurate, but accept no responsibility and disclaim all liability in respect of any errors, omissions, inaccuracies or misstatements that may occur. Prospective purchasers should make their own enquiries to verify the information contained herein. * denotes approximate measurements.