

13 Petworth Close, Mernda, Vic 3754



Sold House

Friday, 24 May 2024

13 Petworth Close, Mernda, Vic 3754

Bedrooms: 4

Bathrooms: 2

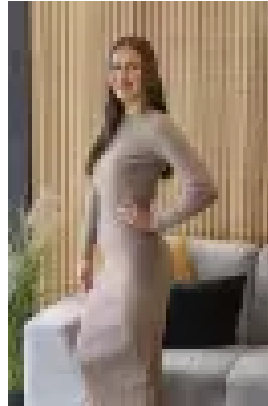
Parkings: 1

Area: 299 m2

Type: House



Ashlee Jade
0397175372



Imogen Hammond
0391111707

\$605,000

A mere stroll into the heart of Mernda Junction Shopping Centre unveils plenty of lifestyle benefits, positioning itself as an ideal haven for individuals and families alike. Surrounded by the inviting ambiance of multiple parks, this location boasts proximity to secondary, primary, and pre-schools, ensuring educational convenience. Additionally, it extends the ease of transportation with a short bus or bike ride to the Mernda station. Showcasing four bedrooms all with built in robes plus walk-in robe and ensuite to the master bedroom, well-appointed kitchen boasting ample cabinetry, quality appliances including dishwasher and stainless steel 600mm stove top/oven, adjacent meals/family area. Blessed with an abundance of extra features including, split system cooling unit, ducted heating, formal lounge/study upon entry, low maintenance gardens, central bathroom, remote single garage with internal access and so much more. This home will appeal to first home buyers, investors, and downsizers. -Inspection is not to be missed!!