

13 Pitta Street, Maudsland, Qld 4210



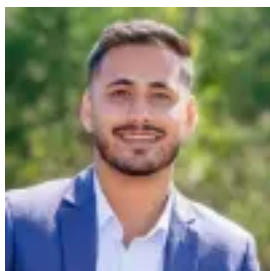
Sold Residential Land

Friday, 16 February 2024

13 Pitta Street, Maudsland, Qld 4210

Area: 469 m2

Type: Residential Land



Alex Surti
0755731077



Will Spry
0755731077

Contact agent

Presented to the market in one of Maudsland's most sought-after neighbourhoods is an exceptional opportunity to secure a registered, spacious, flat block of land measuring 469m², where the hard work is already done for you. This is one of the last remaining flat blocks in the area, and is an opportunity not to be missed! Situated in the heart of Maudsland, this property offers convenience like no other. You'll find yourself just a stone's throw away from shops, schools, and all the amenities you could desire. Plus, a short drive will take you to the highway, as well as Helensvale Westfield and the train station, making commuting a breeze. This is your chance to design and build the home you've always envisioned without the extra costs of earthworks and retaining. Don't miss out on this rare opportunity to secure your piece of paradise in this rapidly growing and vibrant community. - Land Size 469m²- Flat and ready for your dream home- Retaining already in place- No body corporate fees- New street with modern homes- Close to shops and schools- Easy access to Helensvale Westfield and train station

Important: While every care is taken in the preparation of the information contained in this marketing, Ray White CFG will not be held liable for errors in typing or information. All information is considered correct at the time of printing.