

13 Queensberry Street, Keilor Park, Vic 3042

Residential Land For Sale

Wednesday, 31 January 2024



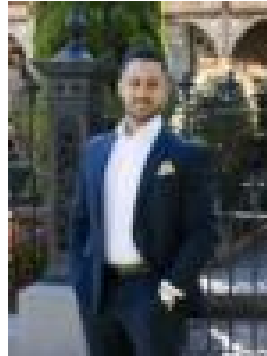
13 Queensberry Street, Keilor Park, Vic 3042

Area: 697 m2

Type: Residential Land



Stefan Stella
0422093149



Ricardo Rodrigues
0407806893

\$765,000 - \$840,000

In the very heart of Keilor Park, this impressive allotment provides an ideal site on which build a fantastic new family home or utilize the land size to realize its dual-occupancy potential (STCA). Key attributes of this vacant block include neighbourhood residential zoning (NRZ1) and a total area of 697sqm (approx) with 15.24m frontage, plus uniform dimensions and minimal gradient across the entire site. Bus stop around the corner (on Erebus Street), it's also close to Fosters Road shopping village, Keilor Park Preschool, local parks and Steele Creek trails, as well as easy access to popular schools, Calder Freeway and Westfield Shopping Centre. So, whether you're looking to build a brand-new family showpiece - or two - the dream begins here. All information about this property has been provided to Ray White by third parties. Ray White has not verified the information and does not warrant its accuracy or completeness. Parties should make and rely on their own enquiries in relation to this property.