

13 Ransley Court, West Moonah, Tas 7009

RIPPLE

Sold House

Saturday, 17 February 2024

13 Ransley Court, West Moonah, Tas 7009

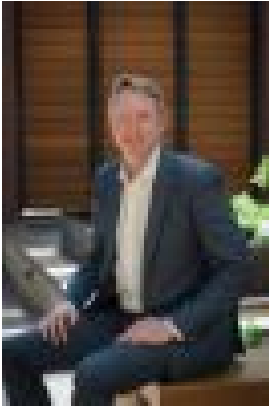
Bedrooms: 5

Bathrooms: 2

Parkings: 4

Area: 587 m2

Type: House



Warwick Page
0362280895

Contact agent

Positioned on a quiet cul de sac in a friendly neighbourhood that's close to the many amenities of Hobart's northern suburbs, this magnificent four (or five) bedroom family home offers exquisite views of the Derwent River and kunanyi/Mt Wellington - and is ideal for those with comfortable and spacious modern living in mind. Plenty of features offer convenience and peace of mind, including ducted heating, data cabling throughout the house and TV antenna ports in all bedrooms, plus a local alarm system. From the ground floor entrance, take the stairs up to the open plan living area, where the elevated position means you can make the most of the spectacular water views every day - the Sydney to Hobart yachts and cruise ships sailing in, New Year's Eve fireworks, and the ever-changing happenings on the river. This generous space includes a light and inviting lounge, kitchen with quality appliances and abundant cupboard space, plus a dining room with enough room for large family dinners or hosting dinner parties. The covered deck is a prime position to survey the cityscape surroundings, enjoying summertime drinks at sunset, or relaxing with a good book. Also on this level are four double bedrooms, including a sizeable master bedroom with walk-in wardrobe and ensuite: a luxurious bathroom with shower, spa, an extended vanity, and separate toilet. Downstairs, you'll find a double garage with extra space for a workshop and storage. A rumpus room (with third toilet) is ideal for watching the footy with mates, as a home office, or an impressive fifth bedroom that would suit teenagers. The lush, low-maintenance garden has an in-ground watering system, and the fenced rear yard contains a superb covered entertaining area, with those breathtaking views as a perfect backdrop. Central Hobart is just 6.5km away, a five-minute drive will take you to Moonah's bustling retail precinct, and there are plenty more attractions and services in New Town and North Hobart. Several reputable schools are located in the area, as well as a regular bus service nearby - just perfect for families. Purchasers searching for a convenient, spacious, and quality-built property - look no further! This exceptional family home ticks all these boxes, and Warwick will be delighted to show you around, so call today to arrange a viewing. We have obtained all information in this document from sources we believe to be reliable; however, we cannot guarantee its accuracy. Prospective purchasers are advised to carry out their own investigations.