

# 13 Saddle Court, Mount Louisa, Qld 4814

## House For Sale

Wednesday, 22 May 2024

McDONOUGH  
PROPERTY

13 Saddle Court, Mount Louisa, Qld 4814

Bedrooms: 4

Bathrooms: 2

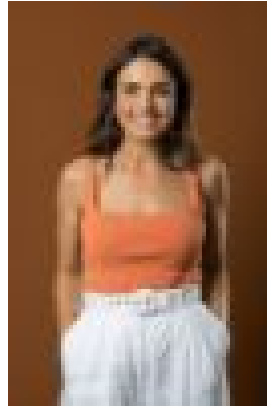
Parkings: 2

Area: 1071 m<sup>2</sup>

Type: House



Martin McDonough  
0438174898



Monique Petersen  
0450955736

## Mid to High \$600,000s

Welcome to 13 Saddle Court, Mount Louisa! This stunning property, situated on a generous 1,071 sqm block, combines luxury, comfort, and functionality, making it the perfect haven for your family. As you step inside, you are greeted by a spacious and well-designed layout that ensures everyone in the family has their own space while also providing areas for gathering and entertaining. Living spaces in this home are abundant and versatile. The separate living and dining areas are perfect for hosting guests or enjoying family meals. These spaces are designed to maximize comfort and functionality, ensuring that everyone has a place to relax and enjoy. The kitchen is a standout feature, with ample bench and storage space, making meal preparation a breeze. The breakfast bar is perfect for quick meals or socializing while cooking. The home boasts four generously sized bedrooms, each designed to offer comfort and tranquillity. The master suite is a true retreat, featuring a walk-in wardrobe and an ensuite bathroom with a large shower. This lovely master retreat also has the added luxury of opening directly onto the patio, allowing you to enjoy your morning coffee while taking in the serene garden views. Both bathrooms in the home are modern and stylish. The main bathroom is equipped with a separate shower and bathtub, providing the perfect space to unwind after a long day. The ensuite bathroom in the master bedroom offers privacy and convenience with its large shower. Outdoor living is just as impressive with this property. The sparkling pool is the centrepiece of the backyard, offering a refreshing escape during the hot summer months. The expansive patio area is ideal for barbecues, outdoor dining, or simply lounging by the pool. The large block provides plenty of space for kids to play or for you to cultivate a beautiful garden. Practical features of this home include double gated side access, a double garage, and an internal laundry. These elements ensure that the home not only looks good but also meets all your functional needs. The double garage provides ample space for your vehicles and storage, while the internal laundry adds convenience to your daily routine. Located in the sought-after suburb of Mount Louisa, this property offers the perfect blend of suburban tranquillity and easy access to local amenities. Enjoy the community feel while being just a short drive from schools, shops, and parks. Don't miss out on this incredible opportunity to own a stunning property in one of the most sought-after suburbs in Townsville. Features:

- Located in the sought-after suburb of Mount Louisa, this property offers the perfect blend of suburban tranquillity and easy access to local amenities.
- Living spaces in this home are abundant and versatile. The separate living and dining areas are perfect for hosting guests or enjoying family meals.
- The kitchen is a standout feature, with ample bench and storage space, making meal preparation a breeze. The breakfast bar is perfect for quick meals or socializing while cooking.
- The master suite is a true retreat, featuring a walk-in wardrobe and an ensuite bathroom with a large shower. This lovely master retreat also has the added luxury of opening directly onto the patio.
- The home boasts three additional generously sized bedrooms, each designed to offer comfort and tranquillity.
- The main bathroom is equipped with a separate shower and bathtub, providing the perfect space to unwind after a long day.
- The sparkling pool is the centrepiece of the backyard, offering a refreshing escape during the hot summer months.
- The expansive patio area is ideal for barbecues, outdoor dining, or simply lounging by the pool.
- Practical features of this home include double gated side access, a double garage, and an internal laundry.
- Situated on a generous 1,071 sqm block.