

13 Salcey Way, Mickleham, Vic 3064



Sold House

Friday, 9 February 2024

13 Salcey Way, Mickleham, Vic 3064

Bedrooms: 3

Bathrooms: 2

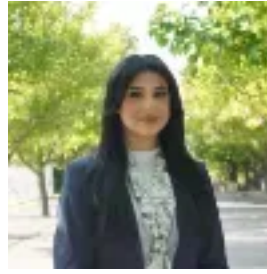
Parkings: 1

Area: 212 m2

Type: House



Steph Shepherdson
0393082277



Brandice Rizkalla
0393082277

\$485,500

Light-filled design, opposite parkland, sun-soaked outdoor living with 32 quality solar panels, this exceptionally versatile three-bedder provides a high quality of life. A pristine exterior and low-key landscaping introduce a continuous-flow layout boasting a stylish kitchen/living/dining zone that maximizes the amount of morning and afternoon sunlight. Anchored by a gourmet kitchen showcasing a dining island, smooth stone surfaces, custom cabinetry and high-end appliances, stacker doors roll back to reveal a timber decked outdoor area that's set against ornamental gardens. Enjoy your morning coffee out here or a glass of wine with friends in the summer evening air. A spacious primary bedroom suite features a walk-in robe and a flawless ensuite, while two additional bedrooms both come with built-in robes and share another modern bathroom, including a separate bath and shower and a separate toilet. Other highlights and creature comforts include a space-efficient laundry, ducted heating, split-system cooling in the living area, extensive solar panel system plus a single remote garage with internal and rear yard access. Opposite Salcey Way Playground and moments from Mickleham Secondary College, Gaayip-Yaglia Primary School, Holy Cross Catholic Primary School, Merrifield Recreation Reserve and Merrifield City, buyers will love the amenity-rich locale. **DISCLAIMER** The vendor, agent and agency in preparing this information have used our best endeavours to ensure that the information contained therein is true and accurate but accept no responsibility and disclaim all liability in respect of any errors, inaccuracies or misstatements contained herein. Prospective purchasers should make their own inquiries to verify the information contained herein.