

13 Shannon Street, Greenacre, NSW 2190



House For Sale

Tuesday, 26 March 2024

13 Shannon Street, Greenacre, NSW 2190

Bedrooms: 4

Bathrooms: 2

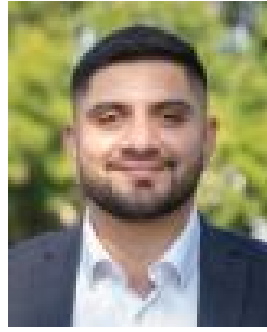
Parkings: 2

Area: 569 m2

Type: House



Mark Saleh
0286685754



Ahmad Elfata
0286685754

AUCTION

Spanning a sprawling 569.09sqm parcel, this sun-washed property encompasses two dwellings on a single block. The main residence boasts three bedrooms and dual living areas, while the self-contained retreat features an open-plan layout with a kitchen, bathroom and bedroom. Embracing a north-to-rear aspect, both dwellings exude charm with timber floors and exposed brick detailing. Conveniently situated just 1.1km from Chullora Marketplace, this multi-generational home offers versatility and potential investment opportunities.- Property sits amid beautifully landscaped gardens and an original brick fence- The spacious family lounge gracefully extends into a sunken living/dining area- Open-air terrace overlooks the established yard, perfect for family gatherings- Full modern kitchen equipped with stainless steel appliances and a dishwasher- Polished timber floors, exposed brick, detailed cornices, fully tiled bathroom- Three/four bedrooms, two are fitted with built-in robes, air-conditioning, downlights- Granny flat or retreat creates a perfect space for in-law or guest accommodation- Modern kitchen with a breakfast bar and laundry facilities, bathroom, lighting- Undercover carport, extended driveway for off-street parking, garden shed- Easy walk to Chullora Public School, Lockwood Park and diverse dining options

DISCLAIMER: While PACE Property Agents have taken all care in preparing this information and used their best endeavours to ensure that the information contained therein is true and accurate, but accept no responsibility and disclaim all liability in respect of any errors, inaccuracies or misstatements contained herein. PACE Property Agents urges prospective purchasers to make their own inquiries to verify the information contained herein.