

13 Swane Street, Ermington, NSW 2115

SIGNATURE
PROPERTY AGENCY

Duplex/Semi-detached For Sale

Wednesday, 3 April 2024

13 Swane Street, Ermington, NSW 2115

Bedrooms: 5

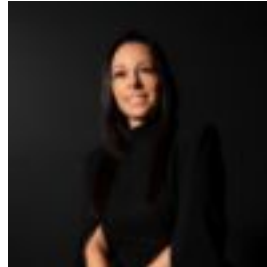
Bathrooms: 3

Parkings: 2

Type: Duplex/Semi-detached



Robert Younis
0402995597



Sanja Komchian
0433058466

\$2,000,000 - \$2,100,000

Nestled in the heart of Ermington, this contemporary home epitomizes modern elegance and sophistication. With meticulously crafted interiors and an opulent floor plan that spans over two levels, this home offers plenty of space for those who like to entertain. •Five Bedrooms soaked in natural light with built in wardrobes. Fifth bedroom downstairs with ensuite and robe, perfect for in-law accommodation •En-Suite and Custom Built in Wardrobe to Master •Contemporary Kitchen with Gas Cooking, Stone Benchtops and Quality Cabinetry with ample storage •Gorgeous Open Plan Living & Dining •Exceptional Outdoor Entertaining Area with a generous rear yard •Huge Upstairs Rumpus with Skylight •CCTV, Smart Door and Ducted Air-Conditioning •Enviably positioned with a north facing rear yard on the river side of Ermington and conveniently located only a few moments away from all major modern amenities such as Melrose Park Village (Under Development), Melrose Park Public School, George Kendall Riverside Park, Ermington Shops & Parramatta/City buses. Be Quick, this won't last. *All information contained herein is gathered from sources we deem to be reliable. However, we cannot guarantee its accuracy and interested persons should rely on their own enquiries*