

1310/7 Katherine Place, Melbourne, Vic 3000



Apartment For Rent

Wednesday, 24 April 2024

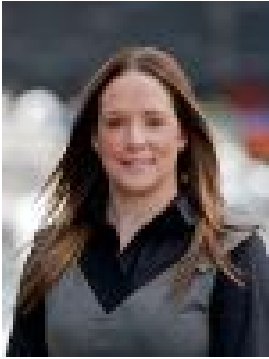
1310/7 Katherine Place, Melbourne, Vic 3000

Bedrooms: 2

Bathrooms: 2

Parkings: 1

Type: Apartment



Jenna Hilton
0390911400



Matthew Tedder
0390911400

\$670 per week

Perched high up in the sought after "AURA" Apartment Complex, this UNFURNISHED apartment offers sized 2-bedroom 2 bathroom with secure car park embraces a vibrant city lifestyle of elegance & style. Enjoy uninterrupted views over the Yarra River & Southbank promenade from this stunning location. Offering a convenient & spacious layout, the light-filled apartment comprises an open plan living-dining area with floor to ceiling windows. The master bedroom features mirrored built in robes and ensuite. A generously sized second bedroom with mirrored built-in robes & brightness flowing in from the light-filled living zone. A well-appointed kitchen featuring glass splash-back, breakfast bar, Caesar-stone bench tops & stainless-steel appliances. also featuring a sparkling central bathroom. Other facilities include 24-7 Concierge, Secure intercom entry and secure car park, TV-monitored security, Lift access and fully equipped-gymnasium. Conveniently located amidst all that the CBD has to offer, near Melbourne's iconic Crown Entertainment Complex filled with world-class restaurants, buzzing bars & top end fashionable boutiques, DFO shopping Centre, riverside restaurants and South Wharf bars. With trams at your doorstep, Flinders, and Southern Cross Stations both a short walk away, this is luxury living at its best in the vibrant city lifestyle.