

1311/1 Grazier lane, Belconnen, ACT 2617



Apartment For Rent

Wednesday, 22 May 2024

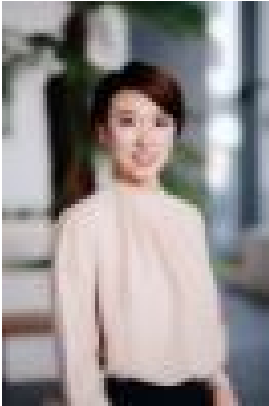
1311/1 Grazier lane, Belconnen, ACT 2617

Bedrooms: 1

Bathrooms: 1

Parkings: 1

Type: Apartment



Ming Sun

0481368613

\$580 per week

Positioned conveniently in Belconnen, this apartment offers seamless access to premier amenities, advanced recreational facilities, and superb entertainment options. Enjoy the convenience of having a Woolworths Metro for grocery needs and various high-quality dining establishments nearby. The scenic Lake Ginninderra and its recreational precinct encourage an active lifestyle. Additionally, The University of Canberra, Canberra's CBD, and ANU are just a brief drive away. This thoughtfully designed one-bedroom apartment with a large built-in wardrobe is crafted to leave a lasting impression. Well-designed living space flooded with natural light offers seamless transitions to a spacious balcony, inviting you to enjoy the expansive views through the large double-glazed windows. The sizeable bedroom offers extensive storage solutions, and the kitchen showcases a sleek, modern design consistent with the rest of the apartment. It features SMEG appliances, an induction cooktop, plentiful storage, and a stylish breakfast bar. Beyond the confines of the apartment, enjoy exclusive amenities including a library, kitchen, gym, pool, and movie theatre on the fifth floor, plus a BBQ lookout area on the twenty-third floor. The ground floor buzzes with a variety of appealing food, beverage, and coffee venues. Property info: *4 weeks bond *EER: 6.0 *Available from 21st May 2024 (6 or 12 months lease) *Fully furnished Features: *Open plan living, dining and kitchen *Double glazed floor to ceiling windows/sliding doors *Large kitchen bench with stone top & breakfast bar *Wall mounted reverse cycle heating & cooling *One well sized bedroom with built-in-robe *European laundry *Access to the balcony from all living area *Private access to a Library, Kitchen, Gym, Pool & Movie Theatre on Level 5, and BBQ Lookout area on level 23 *Coffee shops & Woolworths Metro at your doorstep Location: *7mins walk to Belconnen Bus Interchange *10mins walk to Westfield Belconnen *4mins drive to University of Canberra *10mins drive to Australian National University Contact Ming Sun 04813 68613 for your opportunity! High Society [Belconnen](#) High Society [Woolworths Metro](#) [Lake Ginninderra](#) [University of Canberra](#) [ANU](#) [SMEG](#) [2024](#) [25](#) [21](#) * [6](#) | [12](#); [mingsun1313](#) Disclaimer: The material and information contained within this marketing is for general information purposes only.