

132 Maple Road, North St Marys, NSW 2760



Sold House

Saturday, 24 February 2024

132 Maple Road, North St Marys, NSW 2760

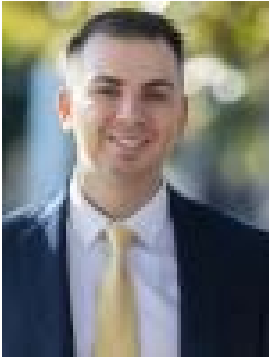
Bedrooms: 3

Bathrooms: 1

Parkings: 2

Area: 561 m2

Type: House



Peter Diamantidis
0296234033



Jerom Palackalody
0296234033

\$875,000

We are pleased to present 132 Maple Road, North St Marys brought to you by award winning agent Peter Diamantidis. Positioned in prime location, this 3-bedroom Brick home is situated close to all amenities such as Queen Street shops, St Marys Village, schools and approximately 1.6km (3min drive) to the St Marys Train Station which is soon to be a Metro Stop for the new Airport currently under construction. Situated on a quiet street and on 561sqm of land, this is a must to inspect! What we like about this property:- Total land size of 561sqm- 3 spacious bedrooms- Brick rendered- Floorboards throughout with carpet to bedrooms- Separate living and dining area- Modern kitchen with ample cupboard space and gas cooking- Spacious bathroom- ONLY MINUTES AWAY FROM THE UPCOMING METRO LINE. For further information, please contact Peter Diamantidis 0404 051 702 or Jerom Palackalody 0481 287 515. Disclaimer: The above information has been gathered from sources that we believe are reliable. However, we cannot guarantee the accuracy of this information and nor do we accept responsibility for its accuracy. Any interested parties should rely on their own enquiries and judgment to determine the accuracy of this information for their own purposes. Images are for illustrative and design purposes only and do not represent the final product or finishes.