

133a Wattle Road, Jannali, NSW 2226

FOX & WOOD

Sold Duplex/Semi-detached

Saturday, 19 August 2023

133a Wattle Road, Jannali, NSW 2226

Bedrooms: 4

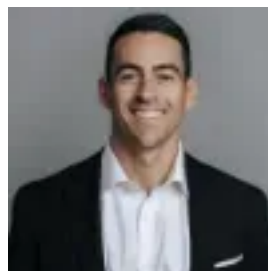
Bathrooms: 2

Parkings: 2

Type: Duplex/Semi-detached



Jed Wood
0408718118



Danny Fox
0408718118

Contact agent

Sitting in a central location, just moments from Jannali village, sits this contemporary home with space, storage and loads of liveability. The floor plan was designed with easy family living in mind, with the large and open living space flowing to the kitchen/dining and out to the sunny and low-maintenance courtyard - enough space for the kids and pets to enjoy. Upstairs you'll find all the bedrooms with a private balcony off the main, as well as an extra rumpus or home office. Why you'll love it -

- Currently rented for \$890 per week.
- Modern, low-maintenance home in a stellar location - close to Jannali schools, shops, station and cafes.
- Contemporary interiors and low-maintenance details - high ceilings and louvre windows, and tiled flooring are a feature in the lounge, dining and kitchen.
- Open plan kitchen with modern appliances including heaps of cupboard space, electric cooking and dishwasher.
- Private and sunny courtyard.
- Extra living space or home office at the top of the stairs.
- main bedroom features its own balcony, walk in robe and deluxe ensuite bathroom, while the other rooms have built-in wardrobes.
- Internal access from remote controlled double lock up garage.
- Fully ducted air-conditioning throughout.
- Size 263m²
- Quarterly rates: Council -\$358/quarter, Water-\$285, Strata \$1033.