

135 Canterbury Jetty Road, Rye, Vic 3941



Sold House

Thursday, 21 March 2024

135 Canterbury Jetty Road, Rye, Vic 3941

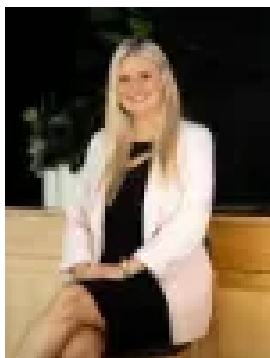
Bedrooms: 4

Bathrooms: 2

Parkings: 2

Area: 875 m2

Type: House



Jade Springer
0359852600

\$1,125,000

Stylishly renovated throughout and offering a long list of quality inclusions, this peaceful seaside home has been completely reimagined to reflect a modern coastal aesthetic where sophistication and relaxation combine in the most beautiful way. The light filled interiors comprise three spacious bedrooms (including a sumptuous primary bedroom featuring ensuite and built in robe), modern family bathroom with custom floating vanity, frameless shower screen, and freestanding soaking tub, a full laundry room and separate toilet, a large open plan living and dining room, plus a luxury kitchen featuring custom cabinetry, waterfall stone island, stone countertops, and ILVE appliances. The home additionally features a workshop, double carport, and an outdoor garden studio which could be utilised as a fourth bedroom, home office or guest accommodation. The large rear yard features a 1.2 x 4 metre Swim Spa, a spacious undercover alfresco featuring built-in BBQ and bar fridge, and a level grassed area surrounded by lush native vegetation. Located just minutes to the pristine Port Phillip Bay Foreshore and Bay Trail, plus an array of exciting local hot spots including cafes, restaurants, nature walks and surf breaks – there has never been a better time to live on the Mornington Peninsula!

Property Features:- Beautifully renovated three bedroom coastal home located just minutes to the foreshore.- Primary bedroom with ensuite.- Quality finishes throughout including stone kitchen benches, Ilve appliances, oak flooring, and waterfall stone island.- Lovely oak flooring.- Gas fireplace and split system air conditioning. - Spacious double carport.- Additional space for trailer, caravan, or boat accommodation.- Fully landscaped grounds.- Rear Garden studio/fourth bedroom.- Workshop and outdoor room with BBQ.- 1.2 x 4 metre Swim Spa. *All distances and measurements are approximate only.