

135 Hutton Road, The Entrance North, NSW 2261



House For Sale

Friday, 19 April 2024

135 Hutton Road, The Entrance North, NSW 2261

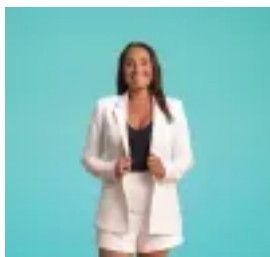
Bedrooms: 4

Bathrooms: 1

Parkings: 1

Area: 651 m2

Type: House



Chantel Laing

0243856423

For Sale

An enticing opportunity awaits the retiree, holidaymaker, renovator, or developer at this rare corner block nestled on the north-east side of Hutton Road. Proudly owned locally for over 50 years, this substantial cottage beckons to those seeking a slice of coastal paradise. A little about the home: Versatile Possibilities: Discover endless potential with this original cottage, offering single-level living, a renovation project, or a new development opportunity. Prime Location: Enjoy the convenience of being just steps away from the beach and the tranquil shores of the lake, making beachside living a reality. A stroll to the local coffee hubs for those who enjoy a relaxed community cafe. Comfortable Living: Relax in the cosy living area and meal space within the kitchen, designed for comfortable coastal living. Functional Spaces: Four bedrooms in total, catering to young families and those holidaymakers requiring ample bedding options. Experience convenience with a functional kitchen, an original bathroom, and an external laundry with a second toilet. Sunlit Retreat: Bask in natural light and sunshine in the inviting front sunroom, perfect for moments of relaxation. Outdoor Delights: Entertain with ease on warm evenings or chilly nights in the undercover rear pergola area, complemented by a beautiful swim spa. Expansive Garden: Enjoy well-established, low-maintenance gardens surrounding this 651sqm parcel, offering ample space for pets, a pool, or children's play equipment. Recreational Paradise: Embrace a lifestyle of fishing, boating, surfing, and swimming in this coastal haven. Modern Conveniences: Benefit from NBN connectivity, ceiling fans, and timber flooring throughout. Rates are estimated at \$2,123.20 per annum, with a potential rental return of \$600-\$650 per week. Located less than 90 minutes from Sydney, 'The Island' is a coveted destination for weekend getaways or a blissful retirement retreat. Don't miss your chance to experience this piece of paradise firsthand. For enquiries and inspections, contact Chantel Laing on 0410 433 213.