

135 Mile End Road, Rouse Hill, NSW 2155



House For Sale

Tuesday, 5 December 2023

135 Mile End Road, Rouse Hill, NSW 2155

Bedrooms: 4

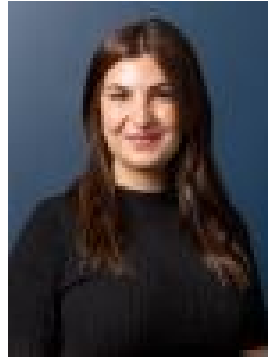
Bathrooms: 2

Parkings: 2

Type: House



Shad McMillan
0414887488



Loren Khamu
0404864808

Just Listed

This modern, stylish, and unique single level family home offers a spacious layout with high ceilings throughout, neutrally styled interiors and amazing bushland views complete with the soothing sounds of the Bell birds. The well positioned living areas include the large formal lounge room and the separate formal dining that is currently configured as an open study. Flowing on to the rear is the open plan family room that enjoys fantastic views as well as the adjacent meals area. The centrally located gourmet kitchen features a large breakfast bar, plenty of cupboards and drawers including a walk-in pantry plus stainless-steel appliances with a gas cooktop. Throughout the home are 4 generous bedrooms that all have built ins and are serviced by an elegantly renovated family bathroom. The master comes complete with its very own walk-in robe and private ensuite. Adding further value to the home include features such as ducted air conditioning and all gas appliances, downlights, ceiling fans and bamboo flooring throughout, a 11kW solar panel system with a Gen 2 Tesla Fast charger. Also, the double garage comes with 1 remote door and internal access. The backyard is built for entertaining family and friends. The two-tier timber decking is surrounded by newly installed glass balustrades where you can enjoy the spectacular views from any angle. The property also offers a low maintenance astro-lawn for the kids and family pets. This tranquil and peaceful location is also very convenient with regular buses only a few minutes' walk away and easy access to Rouse Hill Primary and High Schools plus Our Lady of The Angels, fantastic parks, walking tracks and sporting fields. As well as great shopping at both the Rouse Hill Shopping Village and The Rouse Hill Town Centre with the Northwest Metro alongside. This home is not one to miss!