

136 Morehead Avenue, Norman Park, Qld 4170

House For Rent

Tuesday, 9 April 2024



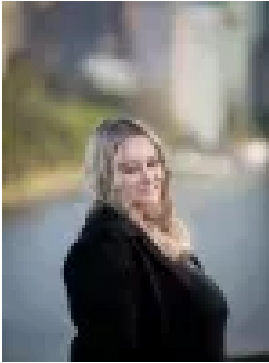
136 Morehead Avenue, Norman Park, Qld 4170

Bedrooms: 3

Bathrooms: 1

Parkings: 1

Type: House



Sarah Camillo
0733911888



Aimee Sharman
0733911888

\$650 per week

Situated in a quiet street in the heart of Norman Park this 3 bedroom, 1 bathroom home is the pick of the bunch. Carpeted lounge, air-conditioned and ceiling fan, separate dining area, neat kitchen with gas cook-top, plus single carport, means that this property won't last. This home is newly carpeted, freshly painted internally, back patio and lovely enclosed front entertaining area. Two bedrooms have air-conditioning. Located 4kms from the City, Norman Park offers proximity to all the amenities that are on offer in Hawthorne, Balmoral and Bulimba. Yet just over the river on a 2 minute ferry ride is New Farm Park Bowls, the Powerhouse and the Farmer's Markets. The Valley and CBD 5 minutes....or South Bank by the Rivercat, Along with New Farm and East Brisbane, Norman Park is a true inner city traditional suburb. Book to inspect now !!