

**136 Peninsular Road, Grays Point, NSW 2232**



**Sold House**

Friday, 22 September 2023

136 Peninsular Road, Grays Point, NSW 2232

**Bedrooms: 2**

**Bathrooms: 1**

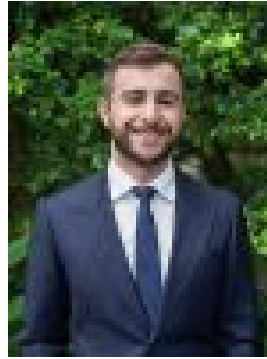
**Parkings: 1**

**Area: 557 m2**

**Type: House**



Dino Salvatore  
0295258066



Marcus Salvatore  
0433388862

## Contact agent

Perched on the high side of the street enveloped in the tranquil lush greenery of Grays Point, this personal haven combines space & functionality with absolute privacy. The interior comprises of two generous bedrooms, a central kitchen & an open plan living/dining area that effortlessly flows out to the covered entertaining balcony with valley views. The home has also been thoughtfully designed to cater for all lifestyles & offers a wheelchair accessible lift between both internal levels. Outside you will find a paved alfresco that adjoins the front balcony as well as a tiered garden & natural rock sculpture at the rear.

- Front entertaining alfresco with lush greenery & valley views
- Spacious open plan living area opening to covered alfresco
- Large kitchen with ample bench space, dishwasher & timber cabinetry
- Separate sundrenched dining room with potential for additional bedroom
- Two generous bedrooms with mirrored built-ins, main with murphy bed
- Modern main bathroom with handicap design featuring frameless shower
- Internal European laundry with wash tub & extra storage
- Paved outdoor terrace adjoining tiered garden & natural rock sculpture
- Single lock up garage with auto door & large storage room/Workshop + extra off-street parking available
- Approximate Land Size: 557sqm

This home is conveniently located close to everything Grays Point has to offer including local waterways, Swallow Rock Boat Ramp, Royal National Park, Jack Gray cafe, Grays Point Public School & within the Kirrawee High School catchment.