

136 Scenic Crescent, Eltham North, Vic 3095



Sold House

Friday, 17 November 2023

136 Scenic Crescent, Eltham North, Vic 3095

Bedrooms: 4

Bathrooms: 2

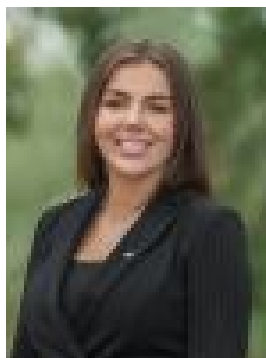
Parkings: 2

Area: 1683 m2

Type: House



Aaron Yeats
0400067024



Ashleigh Garch
0402660934

\$1,250,000

EXPRESSIONS OF INTEREST CLOSING TUESDAY 14TH NOVEMBER AT 4PM (UNLESS SOLD PRIOR) SOLD by Jellis Craig. Nestled amidst the serene beauty of gumtrees and wildlife, this one-of-a-kind family home, a stones throw from the Diamond Creek, occupies a tranquil yet conveniently located space in Eltham North just a 12 minute walk (via Gum Glade) to Eltham train station and shops. A generous allotment of approximately 1,683m², will allow the family ample space to explore, and take in sightings of echidnas, wallabies, platypus and king parrots who frequent this incredible pocket. Upon entering through leadlight doors, you will be greeted by a welcoming, earthy ambiance, characterized by Spotted Gum hardwood floorboards, a cozy wood-burning fireplace, and picturesque leafy vistas. The interior offers three bedrooms, all with robes, including a master suite featuring an en-suite, walk-in robe, and double doors leading to a secluded courtyard. Additionally, there is a well-appointed family bathroom, a modern kitchen with stone countertops and high-quality appliances, an inviting lounge and dining area, and a compact laundry. Outside, this property is designed to provide a soothing escape, featuring an impressive raised deck that immerses you in the beauty of nature, showcasing Eltham living. There's also a brick-paved patio, a charming cubby house, and a powered studio or home office complete with an air conditioner and ample storage space. Further amenities include double glazed windows throughout, split system heating and cooling, ceiling fans, mature native gardens, a water tank, a vegetable garden, a remote-controlled double garage with a workshop area, and additional off-street parking. Situated within easy access to CLC, Eltham's shopping precinct, public transportation, picturesque parklands, and being zoned to Eltham North Primary and Eltham High School - this home is sure to captivate nature enthusiasts seeking the quintessential Eltham lifestyle.