

137 Bradfield Road, Lindfield, NSW 2070



House For Sale

Friday, 17 May 2024

137 Bradfield Road, Lindfield, NSW 2070

Bedrooms: 4

Bathrooms: 2

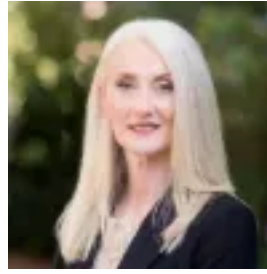
Parkings: 2

Area: 923 m2

Type: House



Scott Phillips
0272270030



Rosanna Morley
0294499066

Auction Saturday 8 June

There is something for everyone in this stylish, light filled home that providing a quiet and serene location that overlooks the beauty of a National Park. Lived in and loved by one family over the last 20 years, its unique split level design promotes a natural separation that works perfectly for everyday life. Perfect for a growing family, this home welcomes spacious living areas and open plan living and dining. Entertaining is always a joy on the substantial rear covered deck that takes a front row setting to the view and overlooks the lawns and pool. Further highlights include a master bedroom with an ensuite and a versatile lower level retreat or home office with ample storage and a cellar. This is a fantastic home to raise a family moments to the bus, parks, local shops and Beaumont Road Public School, with a gate at the rear to walking trails and in the Killara High School catchment.

Accommodation Features: * Superb split level design, timber floors and high ceilings* Large lounge room, flexible home office area* Sweeping open plan living and dining opens out to the deck* Stone topped island kitchen with a Bosch induction cooktop* European appliances, four separate bedrooms with built-in robes* Master retreat with an ensuite, ducted a/c, storage cupboards

External Features: * Peaceful family friendly property with privacy and views* Gate at the rear allows direct access to walking trails* Completely private, screened beyond mature hedging* Large front terrace or additional parking area* Elevated position overlooking the National Park* Immense entertainer's deck positioned for the view* Level lawns at the rear, pool, firepit area, built-in trampoline* Flexible under house retreat or office, wine cellar, abundant storage* Direct access from the double carport, irrigation system

Location Benefits:* Access to walking tracks from its back gate* 120m to the 565 bus services to Lindfield village, Roseville Station, Chatswood and Macquarie * 280m to Bradfield Public Reserve* 950m to Bradfield Park Children's Centre* 1.1km to Fiddens Wharf Track* 1.4km to West Lindfield's local shops and eateries* 1.5km to Lindfield Montessori Preschool* 1.6km to Kids Club Child Care Killara Centre* 1.8km to Beaumont Road Public School* Killara High School catchment* Easy access to Roseville College, Ravenswood and Pymble Ladies College

Auction Saturday 8 June, 4pm
In rooms - 2
Turramurra Avenue, Turramurra
Contact Scott Phillips 0402 272 575
Rosanna Morley 0413 053 322

Disclaimer: All information contained here is gathered from sources we believe reliable. We have no reason to doubt its accuracy, however we cannot guarantee it.