

138 Angove Road, Spencer Park, WA 6330

Sold Residential Land

Tuesday, 26 March 2024



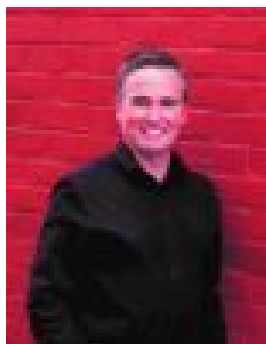
138 Angove Road, Spencer Park, WA 6330

Area: 525 m2

Type: Residential Land



Darren Leslie
0414888244



Rhett Bull
0408264309

Contact agent

As you admire the Porongurup Range and undulating farmland and bush vistas from this rare parcel of vacant residential land comprising 525sqm, it is easy to forget you are living in a central suburb only two-kilometres from Albany's CBD. Also close to shops, schools, medical and sporting amenities and bus stops, and a short drive to the beach, this serviced and elevated lot is one of only two undeveloped lots of its type in the particular section of the street. Build a one or two storey home on the manageable lot to take full advantage of the sunny north-facing rear outlook and some pretty sizzling sunsets. We have a concept plan for a single level elevated home also for your perusal and to help with ideas for your elevation or floorplan. Whether seeking the convenience of city living, or a prime location to invest and reap solid returns from quality tenants, this lot presents a rare and exciting opportunity. For more detailed information or to arrange a private viewing please contact Darren Leslie on 0414 888 244 or email darren.leslie@raywhite.com or Rhett Bull on 0408 264 309 or email rhett.bull@raywhite.com.