

138 Canna Drive, Canning Vale, WA 6155

Residential Land For Sale

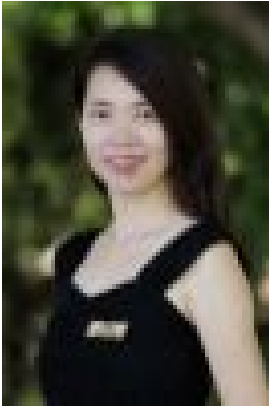
Friday, 3 May 2024

HERITAGE
REALTY

138 Canna Drive, Canning Vale, WA 6155

Area: 461 m2

Type: Residential Land



Sharon Zeng
0894901576

\$860,000

Situated on Chelsea Village this 461sqm MIX USE corner block is a rare find gold site. Land: Green title Ready to build Location:- Approx. 1.8km to Forest Lake Shopping Centre- Approx. 600m to Proposed Nicholson Road Train Station- Approx. 6.5km to Westfield Carousel Shopping Centre- Within Caladenia Primary School Catchment area- Well connected to major roads and arterials including Ranford and Nicholson Roads, Roe, Albany & Leach Highways and the Kwinana Freeway for brilliant commuting in any direction. Exciting make over and infrastructure of Canning Vale area METRONET's Thornlie-Cockburn Link project is the catalyst for medium to long-term redevelopment in the area. This Perth's first east-west cross line connection with new stations at Ranford and Nicholson roads. The project is one of many Building For Tomorrow major transport infrastructure projects that are underway to better connect areas of Perth and the regions, reduce congestion and travel times, create thousands of jobs, support long term development and facilitate new commercial enterprise and employment opportunities in Canning Vale. HURRY! For more information or secure this rare opportunity today, please call Sharon Zeng on 0435 180 341.