

# 138 Salisbury Road, Camperdown, NSW 2050

## Sold House

Monday, 14 August 2023

138 Salisbury Road, Camperdown, NSW 2050

**Bedrooms: 4**

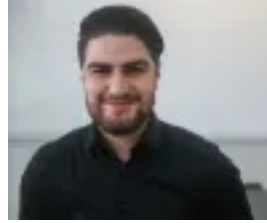
**Bathrooms: 2**

**Parkings: 2**

**Type: House**



Gerard Inangeri  
0418611186



Anthony Inangeri  
0295608111

## Contact agent

Rare and ideal is this property now on the market for the astute investor or property owner. In a sought-after location close to Camperdown village, it presents itself for long term property growth and high return. Presently a dual income residence with complete privacy and access for both apartments, both fully self-contained, both with two bedrooms and both with off street parking to lock up garages. Many period features include fireplaces, high patterned ceilings, character timber floors, this home also caters for large extended family or simply attracts a savvy investor looking for quality investment and great returns. Features include: Rear lane access Lock Up Garages Wide terrace with two street access Solid construction, tile roof High pattern ceilings Picture rails Fireplaces Double sized bedrooms