

138 Yarrabee Road, Greenhill, SA 5140



Sold House

Friday, 1 September 2023

138 Yarrabee Road, Greenhill, SA 5140

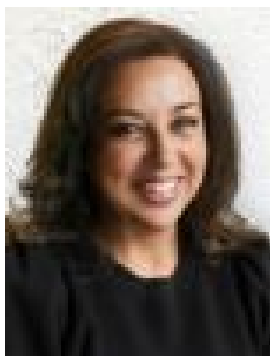
Bedrooms: 3

Bathrooms: 2

Parkings: 3

Area: 990 m2

Type: House



Julianne Price
0408771797

Contact agent

This large 3 bedroom home will have you discovering the ultimate of exclusivity and serenity in the prestigious suburb of Greenhill, where this large remarkable property welcomes with its matchless views and serenely rustic country atmosphere. Nestled in a setting that perfectly balances natural beauty with urban accessibility, this is your chance to seize an extraordinary opportunity. At a glance:- 990.5m² rectangular allotment (approx.) with 19.8m (approx.) frontage- Northeast facing orientation with fall to the rear - Mid 1980's built dwelling- Single carport (drive through access to rear)- 40,000GAL (approx.) rainwater tank with pump- Enviro Septic- Reverse cycle heating & cooling

Property Highlights: 3 Bedrooms, 2 Bathrooms: This well-appointed home features three generous bedrooms, including a master suite with an ensuite bathroom for your ultimate comfort. **Expansive Living Spaces:** The open-concept layout creates a seamless flow between the living, dining, and kitchen areas, perfect for both everyday living and entertaining guests. **Outdoor Haven:** Step outside into your private outdoor oasis, where the decking area provides a perfect setting for outdoor gatherings or quiet moments of reflection. **Spectacular Views:** Envision waking up to breath-taking views that stretch as far as the eye can see. The property offers unrivalled panoramic views that will truly capture your imagination. **Country Calm, City Connection:** Experience the best of both worlds – relish the soothing calm of the countryside while maintaining easy access to the city. A mere 10-minute drive takes you to the renowned Burnside Village or opt for the convenient bus route connecting Greenhill to the city on weekdays. **A World of Recreation:** Just moments away, a children's adventure playground and a community tennis court await, allowing you to indulge in leisure activities while surrounded by the finest views that Adelaide has to offer. **Educational Excellence:** Abundance of Schools: Within approximately 10 minutes' drive, an array of esteemed schools awaits your consideration. Choose from renowned institutions such as St Peters Girls, Pembroke, Norwood Morialta, Marryatville High, Burnside Primary, Linden Park Primary, and Uraidla Primary. The possibilities are endless, ensuring an exceptional education for your family. Envision a life where your imagination knows no bounds, where every day is graced by awe-inspiring views and the harmonious blend of country charm and city convenience. This property is more than a home; it's an embodiment of aspirations fulfilled. Embrace this Extraordinary Opportunity - Contact Us Today to Explore the Possibilities! Zoning | Hills Face Council | \$2428.10 pa ESL | \$114.35 pa Are you thinking of purchasing this property as an investment? Speak with our Property Management team on how we can assist you.