

13A Matcham Road, Buxton, NSW 2571

House For Sale

Monday, 14 August 2023

13A Matcham Road, Buxton, NSW 2571

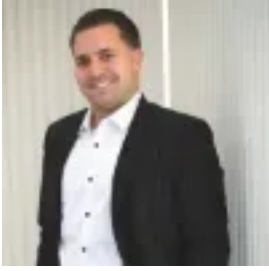
Bedrooms: 4

Bathrooms: 2

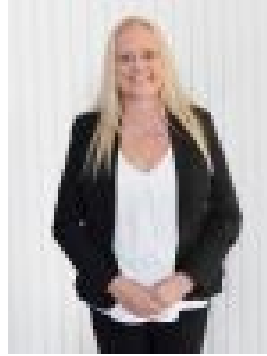
Parkings: 2

Area: 481 m2

Type: House



Mitchell Angel
0246475933



Simone Dennis
0402927636

\$785,000 - \$810,000

Embrace rural living in the beautiful Buxton village in the ever popular Wollondilly Shire. This sleek, contemporary family home is modern & functional, while offering a superb lifestyle in a whisper quiet location. This young family home offers 4 spacious bedrooms with the main offering walk in robe, ensuite & access to the semi enclosed outdoor entertaining area. The three remaining bedrooms all offer built in robes. The modern kitchen comes complete with stone bench tops, stainless steel appliances, gas cooking & generous amount of storage. Multiple spacious living areas offer an abundance of space for the growing family along with a seamless integration between indoor and outdoor living. Property Highlights: + ducted air conditioning, down lights & gas heating + generous, fully fenced rear yard & semi enclosed front yard + enclosed al-fresco makes for perfect year round entertaining + double garage with internal access & ample off street parking Location Highlights: + 550m to Buxton IGA + 750m to Telopea Park + 1.9km to Buxton Public School + approximately 6 minutes drive to Thirlmere Railway Museum + approximately 10 minutes drive to Tahmoor + approximately 14 minutes drive to Picton For more information on this fantastic opportunity contact your Real Property Specialists, Mitchell Angel on 0466 269 487 or Simone Dennis on 0402 927 636.* Real Property Specialists believe that all the information contained herein is true and correct to the best of our ability however we encourage all interested parties to carry out their own enquiries.