

13a Roslyn Gardens, Elizabeth Bay, NSW 2011

Terrace For Sale

Friday, 26 January 2024



13a Roslyn Gardens, Elizabeth Bay, NSW 2011

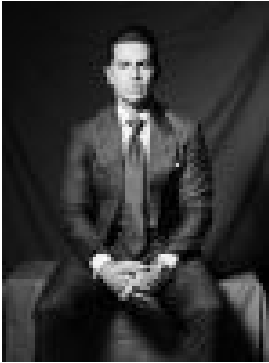
Bedrooms: 4

Bathrooms: 3

Parkings: 2

Area: 183 m2

Type: Terrace



Maclay Longhurst
0283556783



Emily Davidson
0437492378

Buyers guide \$8,000,000

Freestanding to the north, this landmark Victorian Italianate four-level terrace captivates with its grand elegance and magnificent proportions of vast scale rare to find in this blue-ribbon bayside locale just footsteps to cafés, shops, Rushcutters Bay Park and the harbour foreshore. In the premier north position of an iconic row of eight residences, the house impresses with its gracious interiors, wealth of original details, soaring ceilings, leafy vistas, versatile ground floor with own entrance, secure parking and DA approved plans including internal lift to all levels.* Grand 4-level terrace named Glengowan* Living and dining rooms, marble fireplaces * Casual dining with bifold windows to north * Corian kitchen, Smeg/Bosch appliances* Huge master bedroom with b/ins, ensuite* 2 more king-size bedrooms, 3 bathrooms* 2nd living or 4th bed, 2 laundries, studio* Original cedar doors, joinery, leadlights* Iron lace balconies, leafy vistas, air-con* Sunny courtyard, secure 2 car parking