

# 14/115 Shingley Drive, Airlie Beach, Qld 4802

## Unit For Sale

Wednesday, 17 April 2024

14/115 Shingley Drive, Airlie Beach, Qld 4802

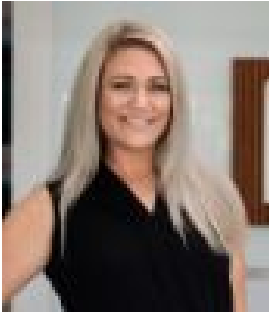
**Bedrooms: 3**

**Bathrooms: 2**

**Parkings: 1**

**Area: 171 m2**

**Type: Unit**



Sarah Dean

0749462000

**\$749,000**

Indulge in the epitome of luxury living with this stunning two-level penthouse boasting panoramic ocean views overlooking the Coral Sea Marina. Situated in tropical North Queensland, you'll enjoy unrivalled vistas of the azure waters, with the marina serving as a gateway to the Great Barrier Reef and the Whitsunday Islands. As the sun sets, the glittering lights of yachts and boats will enchant you, creating a magical evening ambiance. Step onto the expansive balcony and savour every moment as you sip and dip while witnessing the mesmerizing sunsets. The lower level welcomes you with impressive open plan living spaces, offering breathtaking views of the Coral Sea and nearby islands. A gourmet kitchen, equipped with high-quality stainless-steel appliances, provides both indoor and outdoor dining options. Throughout the space, enjoy the comfort of air conditioning and ceiling fans. A well-appointed bedroom and a separate powder room complete this level. Ascend to the upper level to discover a luxurious master suite that extends to a private balcony, accompanied by a stunning private ensuite featuring modern finishes and floor-to-ceiling tiles. Additionally, there's a walk-through wardrobe for added convenience. The third bedroom also offers captivating ocean views, a walk-through wardrobe, and dual access to the spacious bathroom. A separate laundry area equipped with a washing machine and dryer ensures your comfort. For added convenience, a single lock-up garage and lockable storage are provided beneath the building—an uncommon amenity in this area. This light-filled penthouse has undergone a complete renovation, boasting a neutral colour scheme and timeless finishes. It will be sold fully furnished, including white goods. Nestled within the prestigious 'Shingley Beach Resort,' enjoy the option of swimming in the two sparkling pools within the resort and direct beachfront access opposite Shingley Beach. Whether it's a leisurely afternoon BBQ, kayaking, stand up paddle boarding, or a stroll along the boardwalk to local cafes, Coral Sea Marina, or the vibrant restaurants and bars of Airlie Beach, this location offers an unparalleled lifestyle. Currently part of the holiday letting pool managed by us here at Accom Whitsundays, this property presents an excellent investment opportunity for discerning investors. Due to limited availability, please contact me to arrange an inspection. Sarah Dean - 0473 032 042.