

14/226-232 Bronte Road, Waverley, NSW 2024

Sold Apartment

Thursday, 9 November 2023

14/226-232 Bronte Road, Waverley, NSW 2024

Bedrooms: 2

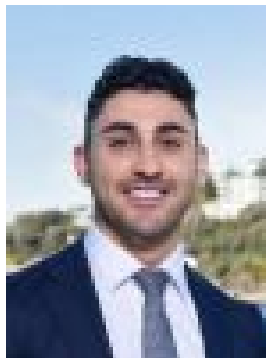
Bathrooms: 2

Parkings: 1

Type: Apartment



Chris Volpatti
0414867454



Joey Shatari
0466969750

Contact agent

With sensational northerly panoramic views of Sydney's CBD, Blue Mountains all the way to Botany Bay this top floor split level entertainer basks in year-round sunlight and fabulous cooling sea breezes.- Premiere apartment in a tightly held block.- Sun drenched top floor split level apartment - Concertina doors merge the generous in/outdoor living space - Large king master bedroom offers ensuite with bathtub - Both bedrooms enjoy balconies with northerly district views - Sleek stone kitchen fitted with Smeg gas appliances - Under stair storage and separate hidden laundry - Contemporary secure block and underground car space - A short walk away from Queens Park and Bronte Beach - Walking distance to Westfield, trains, bus interchange and cafe dining