

**14/233A Johnston Street, Annandale, NSW 2038**



**Sold Apartment**

Saturday, 13 January 2024

14/233A Johnston Street, Annandale, NSW 2038

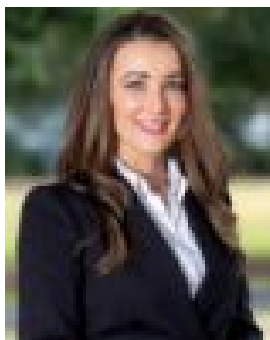
**Bedrooms: 1**

**Bathrooms: 1**

**Parkings: 1**

**Area: 93 m2**

**Type: Apartment**



Tina O'Connor  
0290034408

**\$895,000**

Experience a vibrant Annandale lifestyle that has it all in this stylish one-bedroom plus study apartment that rises to all expectations with its sleek single-level layout, crisp interiors and dynamic views to the city skyline. This entire home & garage parking is wheelchair accessible making it the perfect choice for young or old buyers or investors seeking a smart easy-to-maintain property that's private, secure and tucked away within the architectural Portobello complex close to the heart of the village. The location enjoys every convenience and has foreshore parklands, the popular Tramsheds precinct, light rail transport and Booth Street cafes all within strolling distance. • A convenient ground floor position with easy level street access • Light-filled open plan design enjoying an elevated easterly aspect • A wide covered dining balcony that captures full city panoramas • Oak timber flooring, ducted air-conditioning and intercom entry • Large-sized bedroom with extensive built-ins and balcony access • Separate study/home office, internal laundry and designer bathroom • Quality modern kitchen equipped with gas cooking and dishwasher • Lift/wheelchair access to a security basement car space and personal storage cage