

14/29-31 Hotham Street, East Melbourne, Vic 3002



Townhouse For Sale

Friday, 24 May 2024

14/29-31 Hotham Street, East Melbourne, Vic 3002

Bedrooms: 2

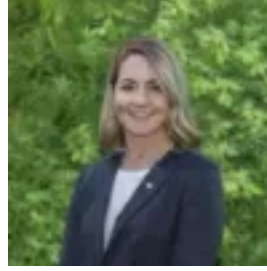
Bathrooms: 1

Parkings: 2

Type: Townhouse



Peter Hannon
0394283333



Jodie McCarthy
0394283333

\$850,000 - \$930,000

Preceded by a pair of charismatic Art Deco apartment buildings, this bright and sophisticated residence provides upscale easy living among storied and sought after East Melbourne. Enjoying the leafy charm and countless conveniences of its prized position, an intelligent interior spans three considered storeys, with emphases placed on entertaining and coverage of passive light. Making optimal use of its northern aspect, a relaxing terrace adjoins a brilliant living/dining section, catered for by an enthusiast's wraparound kitchen boasting ample bench and cabinet space alongside premium stainless steel appliances. A stylish bathroom joins impressive robe storage in servicing two sizeable upper bedrooms, while other highlights include heating/cooling, scattered skylights, hardwood floors, an intercom, and double garage with laundry. Serene and secluded while moments from the best of Melbourne, it's metres from energetic and fashionable Collingwood, Fitzroy, and Richmond lifestyle precincts, trains and trams, and the iconic MCG, with quiet and colourful Fitzroy and Treasury Gardens revealing Melbourne's vibrant East End.