

# 14/3-5 Burlington Road, Homebush, NSW 2140



## Unit For Sale

Friday, 22 December 2023

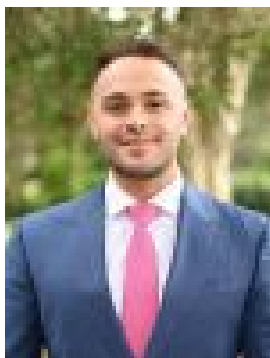
14/3-5 Burlington Road, Homebush, NSW 2140

**Bedrooms: 2**

**Bathrooms: 1**

**Parkings: 1**

**Type: Unit**



Elie Semrani  
0452353735

## Contact Agent

We are pleased to present this impeccably appointed two-bedroom apartment, situated in the highly sought-after locale of Homebush. Peacefully and privately positioned, this full brick entertainer effortlessly blends contemporary style with character, offering a low-maintenance lifestyle perfect for first home buyers or savvy investors. Recently refreshed and ready to move into, this residence boasts well-proportioned interiors, including separate lounge and dining spaces that provide ample room for relaxation and entertainment. The apartment features two generously sized bedrooms, each equipped with built-in wardrobes, ensuring plenty of storage space. At the heart of the home is a deluxe kitchen, showcasing original fixtures with a cooktop, oven and an expansive layout. This is an ideal space for home cooking and entertaining. A fully tiled bathroom adds to the contemporary appeal, complete with a separate shower and bath. Plus an internal laundry provides added convenience. Constructed from full brick, this apartment promises durability and quality. Additional features include a security intercom system, well-maintained common areas, and the invaluable addition of one car space on title. Building lift access further simplifies the living experience in this apartment complex. Located a short stroll away from both Strathfield and Homebush amenities, this apartment offers a community-centric lifestyle. Enjoy the convenience of being within walking distance to Homebush Village, Homebush Public School, various shops and cafes, and the Homebush Train Station. This is not just an apartment, but a great investment opportunity in a thriving area. Don't miss out on your chance to secure a piece of this vibrant community. Arrange an inspection today.