

**14/7 Chapman Avenue, Beecroft, NSW 2119**

STONE

**Unit For Sale**

Wednesday, 15 May 2024

14/7 Chapman Avenue, Beecroft, NSW 2119

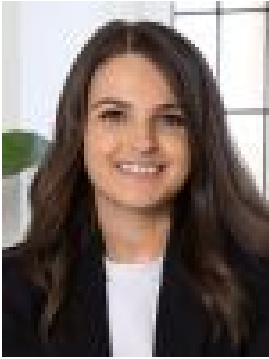
**Bedrooms: 2**

**Bathrooms: 2**

**Parkings: 1**

**Area: 141 m2**

**Type: Unit**



Chloe Mawass  
0288661500



James Ramsay  
0288661500

**For Sale \$1,350,000 - \$1,450,000**

The essence of sophistication, this deluxe apartment enthralls with its intuitive design and coveted north facing aspect delivering an uplifting light infused ambiance. Crafted for relaxation, the layout centres around elegant open plan living rooms connecting to a fabulous all weather entertainers' terrace. It's a leisurely stroll to Beecroft Village shops, the station, restaurants and lively cafes. - Located in the prestige 'The Croft' complex within the heart of Beecroft- Beautiful open plan living/dining zones graced with wide oak timber floors- Seamless flow to generous undercover terrace for glorious entertaining- Chef's Caesarstone and gas kitchen boasts Smeg appliances and dishwasher- Enticing double bedrooms have mirrored built-in robes and plantation shutters- Ensuite and timeless main bathroom/laundry offer a tasteful natural palette- Study zone, drying room, delightful in-built cabinetry and clever storage- Ducted air conditioning, secure complex, lift to car space plus storage cage- In the catchment for Beecroft Public, Cheltenham Girls & Carlingford High - 400 metres to the station, 240 metres to shops, eateries and supermarket- Shortcut through complex to village, 550 metres to Beecroft Public School Council Rates - \$320 per quarter Water Rates - \$171.41 per quarter Strata Rates - \$1,677.90 per quarter