

14/88 James Ruse Drive, Rosehill, NSW 2142

Laing + Simmons

Sold Unit

Tuesday, 17 October 2023

14/88 James Ruse Drive, Rosehill, NSW 2142

Bedrooms: 2

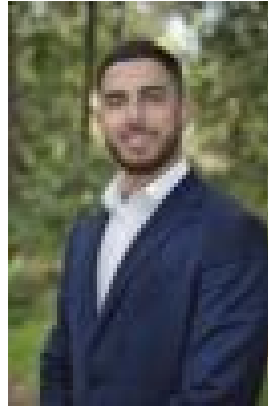
Bathrooms: 2

Parkings: 1

Type: Unit



Ray Fayad
0296378111



Nabil Mouslemani
0296378111

\$438,000

Please enter from Eleanor Street Well maintained two-bedroom apartment conveniently located opposite Rosehill Racecourse and on the cusp of the Parramatta CBD within walking distance to both Parramatta and Harris Park CBD, public transport and the new light rail. Located in a security block, this apartment is the perfect opportunity to secure a sound investment or first home. Property features:-Two bedrooms with wardrobes-Ensuite bathroom-Large alfresco balcony-Spacious living and dining space-Kitchen with gas cooking-Internal laundry-Secure car-space Location:-Opposite Rosehill Racecourse-500m to M4 Motorway-1.9km to Harris Park Shops-2km to Harris Park Station-2.5km to Parramatta CBD