

14 Cranbourne Crescent, Morphett Vale, SA 5162



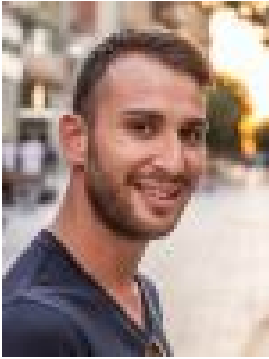
Residential Land For Sale

Friday, 17 November 2023

14 Cranbourne Crescent, Morphett Vale, SA 5162

Area: 688 m2

Type: Residential Land



Chris Raptis

\$700,000 - \$770,000

The location is tightly-held and much-loved by surrounding families for good reason—so don't settle for second best, this one's for you! The low-maintenance home reveals a boundless block (or blocks STCC) to build a multiple dwelling homes as this plot is perfectly flat and ready to sub divide (STCC) as 688sqm (approx) is waiting for you... Ready, set, build! Plan now with your builder or architect of choice, to build what you want in this ever-popular locale - the possibilities are endless! It's rare to find a block in such a quiet residential area and indeed an allotment of this size so close to the city, position is the key. Don't let this one be the one that got away... Specifications:CT / 5256 / 601Council / City of OnkaparingaZoning / Residential R/40Built / 1968Land / 688m2Frontage / 22.9m & 27.7mCouncil Rates / \$1351.45paEmergency Services Levy / \$238.55paSA Water / \$280.96pqEstimated rental assessment / (Currently tenanted on a periodic lease with the same tenant of 6 years) It is important to note this disclaimer upon you - as the potential purchaser/s to obtain independent professional advice as all information marketed, care of the property on behalf of the vendor/s has been sourced from external sources. Raptis Real Estate as authorised agents (RLA: 267938) is neither responsible for the content/s of the information, nor accepts liability to any party who might use or rely upon this information in whole or part of its contents of any errors or omissions including, but not limited to the land size, build size or dimensions, floor plans, building age and or condition or any other particulars of Interest.