

14 Fairbank Crescent, Templestowe Lower, Vic 3107



Sold House

Tuesday, 20 February 2024

14 Fairbank Crescent, Templestowe Lower, Vic 3107

Bedrooms: 4

Bathrooms: 2

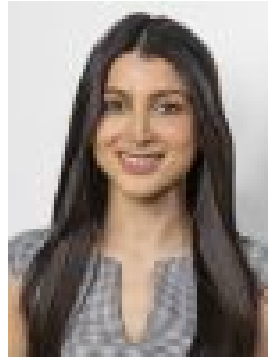
Parkings: 2

Area: 652 m2

Type: House



Mark Di Giulio
0407863179



Raha Hossain
0449054007

\$1,521,000

Beautifully renovated to reflect a modern lifestyle this stylish and sophisticated family home could not be better placed for a new family to simply move in and enjoy modern living for many years. A thoughtful and flowing floor plan begins with traditional timber floors which make their way through a large living and dining area flooded with natural light. Step into a simply stunning open kitchen and dining precinct with plenty of room to entertain, the incredible kitchen featuring stone benches, an Island bench and breakfast bar, stainless steel appliances and an abundance of soft-close storage. Four bedrooms with robes provide ample accommodation, the master has its own magazine worthy en-suite with oversized walk-in shower and floor-to-ceiling tiles, while all have proximity to the matching magazine worthy main bathroom with shower, separate bath and those sleek tiled finishes. A separate family/rumpus room provides yet another place to convene with family and friends, connecting cleverly to an open entertaining deck which compliments a covered outdoor seating area and low-maintenance private backyard. Gas ducted heating, evaporative cooling, a barbecue area, garden sheds and a double carport are just some of the inclusions. Incredibly located within walking distance to Templestowe Heights Primary School, St Kevin's Primary School and Templestowe College, close to Aquarena Aquatic Centre, Templestowe Village shopping and the Macedon Plaza Shopping Centre, with easy access to Westfield Doncaster Shoppingtown, High St Rd, Manningham Rd, Doncaster Rd, Tram Rd and the Melbourne CBD via the Eastern Freeway.