

14 Katherine Grove, Crafers, SA 5152

HARRIS

Sold House

Thursday, 16 November 2023

14 Katherine Grove, Crafers, SA 5152

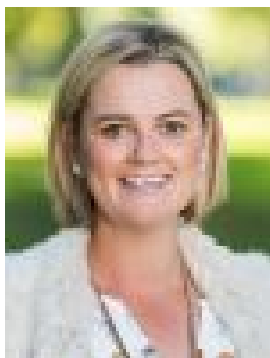
Bedrooms: 4

Bathrooms: 1

Parkings: 2

Area: 3920 m2

Type: House



Arabella Hooper
0403336407



Taryn Varcoe
0405591561

Contact agent

Relishing a spate of stylish updates and an inspired re-invention of its two-storey footprint, a home oozing an architectural style and era that have become so synonymous with the Adelaide Hills, has a new lease on life. If you aren't familiar with its distinct late '70s/early '80s style, let us introduce you to soaring raked ceilings, exposed brick walls and big, big windows born to frame the lush gardens that make this flexible, elevated 4-bedroom home often feel like it's hovering in the treetops. This one was built in 1977. Its modern white colour scheme, chic fully-tiled bathrooms, contemporary lighting & brand new open-plan kitchen make it your multi-level Hills Sanctuary. The floorpan re-jig moved the kitchen and living room to a boundless upper level with beamed ceilings, chevron European Oak floors and an expansive terrace, ensuring the best family moments come with the most beautiful outlook of all. Four bedrooms sit on the lower floor, including a huge master bedroom with its own dressing/study zone, cosy combustion fireplace, a sea of picture windows and wonderful separation in its own secluded wing. Feeling secluded doesn't mean you are; the magic of living above street level, yet so close to Crafers Primary School, Crafers, Stirling village and the Tollgate, is something to savour. Let us introduce you to your new home. More to love:- Architecturally designed with double brick construction- Set back from, and elevated above, Katherine Grove to create complete sanctuary- Flexible multi-level floor plan with additional living zone/retreat to lower level- Fully renovated throughout- High-end fixtures and finishes to stylishly updated wet areas- Efficient split r/c, combustion fireplaces and gas wall heater- Loads of storage throughout- Brand new kitchen with breakfast bar and dishwasher- New floor coverings throughout- Double carport and large shed- Separate laundry and powder room- Off-street parking for multiple cars- Rainwater tanks with quality filtration system- Established gardens with quality bore- Under five minutes from Crafers and Stirling Villages- Just 10 minutes from the Tollgate- Enviably positioned on the edge of Mount Lofty Botanic Gardens Specifications: CT / 5684/500 Council / Adelaide Hills Zoning / PRuL Built / 1977 Land / 3920m² Council Rates / \$2,620.27pa Emergency Services Levy / \$180pa SA Water / NA Estimated rental assessment / \$900 - \$1,000 per week / Written rental assessment can be provided upon request Nearby Schools / Crafers P.S, Uraidla P.S, Upper Sturt P.S, Heathfield P.S, Heathfield H.S, Urrbrae Agricultural H.S Disclaimer: All information provided has been obtained from sources we believe to be accurate, however, we cannot guarantee the information is accurate and we accept no liability for any errors or omissions (including but not limited to a property's land size, floor plans and size, building age and condition). Interested parties should make their own enquiries and obtain their own legal and financial advice. Should this property be scheduled for auction, the Vendor's Statement may be inspected at any Harris Real Estate office for 3 consecutive business days immediately preceding the auction and at the auction for 30 minutes before it starts. RLA | 226409