

14 Layla Crescent, Tarneit, Vic 3029

Sold House

Wednesday, 4 October 2023

14 Layla Crescent, Tarneit, Vic 3029

Bedrooms: 4

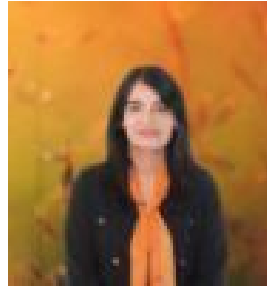
Bathrooms: 3

Parkings: 2

Type: House



Harpreet Mangat
0416412414



Babli Kundu
0452235683

\$725,000

Bal Real Estate Werribee is delighted to present this gorgeous double story family home. This stunning home is situated in prestigious Newgate estate & is built by Grandeur Home. This is the house you have been waiting to call it your home. This double level home consists of 4 bedroom and 3.5 bathrooms. This architecturally crafted residence sets a new standard for elegance, comfort and contemporary living. The large open plan kitchen, meals and family areas create a comfortable shared space. The kitchen is equipped with stone benchtops with waterfall in both of the sides, 900mm quality appliances, dishwasher, great storage capacity with overhead cupboards and impressive walk-in pantry. inspired features are everywhere: * Master bedroom with spacious WIR and ensuite * Additional 3 bedrooms with BIR serviced by central bathroom. * Spacious balcony* Floor to ceiling tiles in the wet areas* Porcelain tiles * freestanding tub in the master ensuite* Designer chandelier in the entryway* Powder room * Stunning kitchen with stone bench top, gas cooktop, oven, rangehood, dishwasher plus walk-in pantry. * Impressive wooden staircase* Storage under the staircase* Ducted Heating * Evaporative Cooling * Downlights * Feature walls * Ample storage space* Security alarms * Spacious laundry room with external access and a big storage cabinet. * Double remote-controlled garage with internal access. * And so much more...You will be moments away to the Riverdale Village Shopping Centre, Tarneit Gardens Shopping Centre, Davis Creek parks and future new town center on Sayers Road. This affordable and lively estate with easy access to public transport, Childcare and Kindergarten, This home is the one you have been waiting for so definitely put it on the must see list to avoid disappointment. Ticks all the buyers wish list:* Approx 30sq house* Approx 1 km walk to new Karwan Primary School, upcoming Riverdale East Secondary School & Daniella Community Centre* Bus stop to Tarneit train station at 400 m walk* Approx 2 kms to Davis Creek Primary School & ICOM* Approx 2.5 kms to Good New Lutheran College* Approx 2 kms drive to New Riverdale Village Shopping Centre* Approx 10 mins drive to Tarneit Train StationCome and view this family home that is certain to attract an assortment of potential buyers. This beauty can be yours. INSPECT before it's GONE Team Bal Real Estate Werribee welcomes you and looks forward to servicing your real estate needs.Please call: HARPREET MANGAT on 0416412414 to arrange an inspection.*All information offered by Bal Real Estate Werribee is provided in good faith. It is derived from sources believed to be accurate and current as at the date of publication and as such Bal Real Estate Werribee simply passes this information on. Use of such material is at your sole risk. Prospective purchasers are advised to make their own enquiries with respect to the information that is passed on.BAL Real Estate Werribee will not be liable for any loss resulting from any action or decision by you in reliance on the information.PHOTO ID MUST BE SHOWN TO ATTEND ALL INSPECTIONS*Please see the below link for and up-to-date copy of the Due Diligence Checklist:<https://www.consumer.vic.gov.au/duediligencechecklist>