

14 Leamington Road, Telopea, NSW 2117



Duplex/Semi-detached For Rent

Friday, 12 April 2024

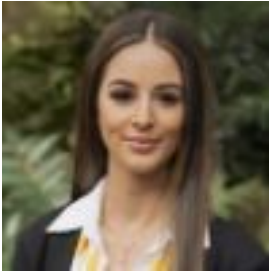
14 Leamington Road, Telopea, NSW 2117

Bedrooms: 5

Bathrooms: 3

Parkings: 2

Type: Duplex/Semi-detached



Chantelle Coluccio

0298763133

\$1,250 per week

Nestled in a whisper-quiet location, this oversized duplex offers a unique blend of tranquility and accessibility. A relatively new construction, this spacious family home showcases modern architecture and contemporary design offering a perfect balance of excellent functionality. Thoughtful environmental considerations providing year round liveability and low maintenance lifestyle. The location of this duplex adds to its allure, situated conveniently close to shops, the new light rail and prestigious schools. Featuring: -5 large bedrooms, master with ensuite, upstairs front bedrooms feature covered balcony with breathtaking distant views-Ground floor guest bedroom with bathroom, Large family room, dining and eat in kitchen-Built with eco-conscious features, including a water tank, reverse cycle air conditioning and a quality hot water system-Expansive rear yard with undercover entertaining, productive fruit trees to be enjoyed by gardening enthusiasts-Located within vicinity of local shops, new light rail station, James Ruse, Tara Girls and The Kings High Schools