

# 14 Manor House Drive, Epping, Vic 3076



## House For Sale

Saturday, 11 May 2024

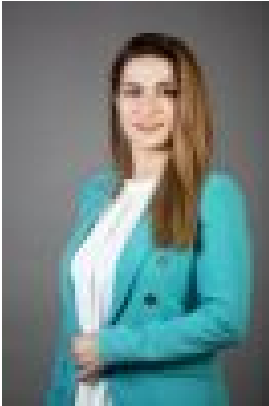
14 Manor House Drive, Epping, Vic 3076

Bedrooms: 4

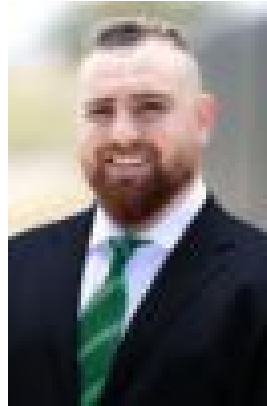
Bathrooms: 2

Parkings: 2

Type: House



Noora Duqman  
0447166526



Moe Almnahi  
0466121826

## **Experience the Best of Contemporary Living**

Welcome to 14 Manor House Drive, Epping! This stunning 4-bedroom, 2-bathroom house epitomizes the perfect blend of modern design and functionality. Boasting a spacious living area, a beautiful backyard, and a double garage, this property offers everything you need for comfortable living. Situated in a desirable neighborhood, this property is ideal for families seeking a comfortable and stylish home. The open floor plan encompasses a dining room, kitchen, and living room, all adorned with hardwood flooring and modern finishes. Step outside to enjoy the outdoors on the deck or in the yard, perfect for entertaining guests or unwinding amidst nature. Additionally, the property features a porch, ideal for savoring your morning coffee or witnessing the sunset. Conveniently located within walking distance of Epping North shopping centre, Epping Views Primary School, and numerous well-maintained parks and walking paths, this property offers easy access to essential amenities. Experience a high-caliber lifestyle in a premier location, with nearby amenities including Epping North Shopping Centre, Pacific Epping Shopping Centre, medical facilities, pharmacies, cafes, primary and secondary schools, childcare centres, and the O'Herns Road Hume Freeway Ramp. Don't miss this unparalleled opportunity to indulge in luxury living in the esteemed Lyndarum Estate. For enquiries, contact Noora Duqman at 0447166526 or Moe Al-mnahi at 0466 121 826. Don't let this amazing opportunity to own a beautiful home in a prime location pass you by.