

14 Selby Place, Berriedale, Tas 7011

PETERSWALD
for property

Sold House

Saturday, 12 August 2023

14 Selby Place, Berriedale, Tas 7011

Bedrooms: 3

Bathrooms: 1

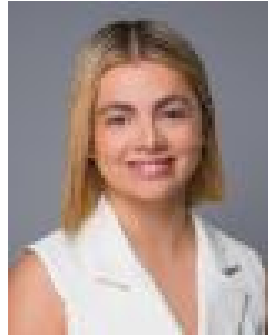
Parkings: 4

Area: 740 m2

Type: House



Harry Coomer
0448544100



Georga Hunt
0417541878

Contact agent

Occupying a sunny and elevated position that provides an ever-changing panorama of the River Derwent, iconic Mona Museum and rolling the hills beyond this family home provides fantastic comfort in a sought-after location. The heart of the home is a bright, open, and light-filled combined lounge and dining area, where beautiful vistas greet you. The indoor/outdoor living is seamlessly facilitated by a balcony and deck, making it effortless to enjoy the surrounding scenery. The open plan space seamlessly incorporates a sleek kitchen, complete with stainless-steel appliances, ample bench space, and plentiful cupboard storage. The accommodation consists of three generously sized bedrooms, each equipped with built-in wardrobes. The master bedroom enjoys direct access to the family-sized bathroom, while a separate toilet is conveniently located nearby. The laundry provides ample storage space and offers direct outdoor access for added convenience. On the lower-ground floor, you'll find a versatile rumpus room, featuring bench seating, additional storage options, and direct access to the outdoors. A double garage provides parking for two vehicles, with additional parking available in the driveway. A spacious deck awaits, offering an idyllic setting for alfresco dining and outdoor entertaining, surrounded by a tiered backyard adorned with established greenery. Ideally situated just minutes away from schools, shops, and services, this delightful home presents a wonderful opportunity to reside in a serene location under 20 minutes from Hobart's CBD.